

## Informe renta fija a nivel mundial (\*)

Fecha 17/11/2022

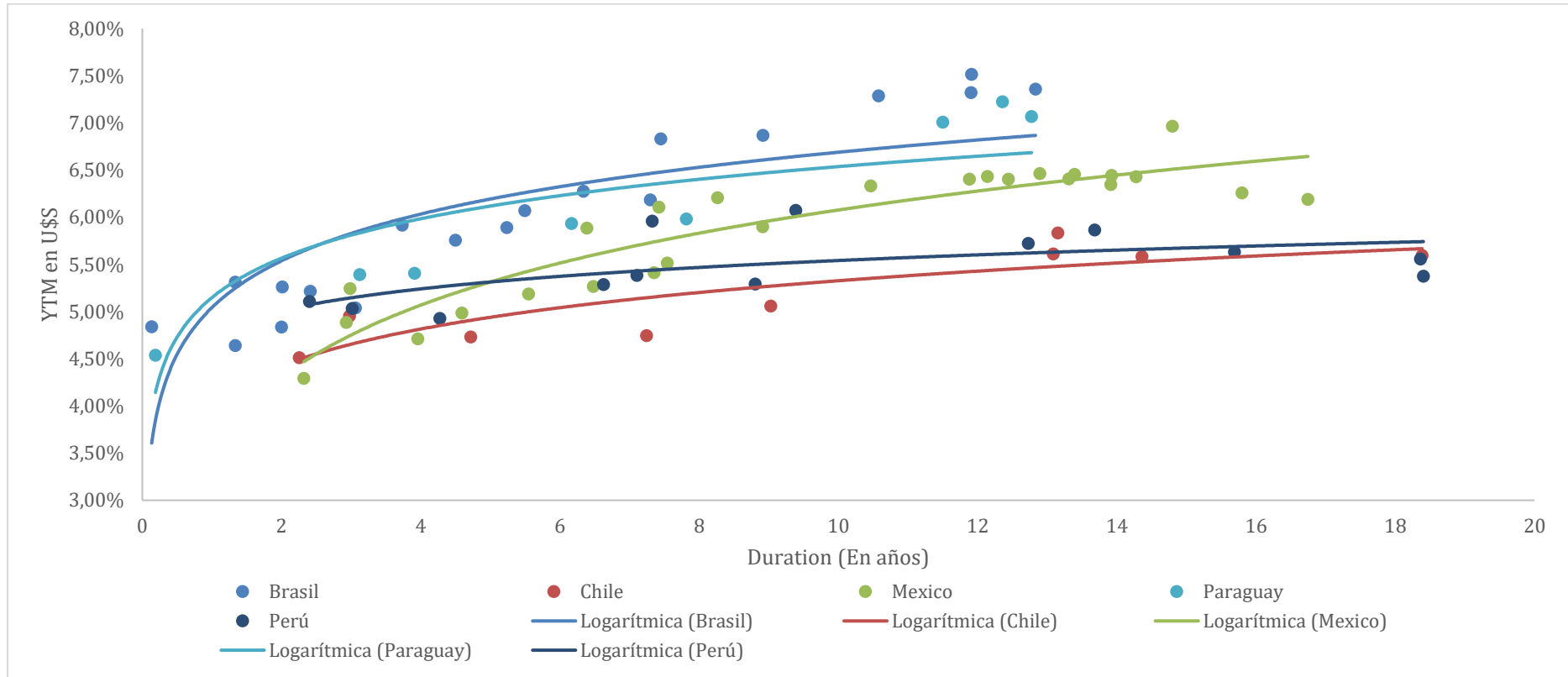
### Índice

|                                                                                                 |          |
|-------------------------------------------------------------------------------------------------|----------|
| <b>Curvas de tasas soberanas.....</b>                                                           | <b>3</b> |
| Curvas de tasas soberanas de América Latina en USD.....                                         | 3        |
| Curvas de tasas soberanas de Estados Unidos.....                                                | 4        |
| Curvas de tasas soberanas países europeos en EUR.....                                           | 5        |
| Curvas de tasas soberanas países asiáticos, excluyendo a Japón, en USD.....                     | 6        |
| Curvas de tasas soberanas países desarrollados, excluyendo Europa y Estados Unidos, en USD..... | 7        |
| <b>Curvas de tasas por sector en Estados Unidos .....</b>                                       | <b>8</b> |
| Curvas de tasas Sector Financiero Estados Unidos.....                                           | 8        |
| Curvas de tasas Sector Industrial Estados Unidos.....                                           | 9        |
| Curvas de tasas Sector Telecomunicaciones Estados Unidos.....                                   | 10       |
| Curvas de tasas Sector Real Estate Estados Unidos.....                                          | 11       |

|                                                                    |           |
|--------------------------------------------------------------------|-----------|
| Curvas de tasas Sector Consumo Básico Estados Unidos .....         | 12        |
| Curvas de tasas Sector Consumo Discrecional Estados Unidos.....    | 13        |
| Curvas de tasas Sector Salud Estados Unidos .....                  | 14        |
| <b>Bonos Corporativos en Estados Unidos, Europa y China.....</b>   | <b>15</b> |
| Bonos corporativos Investment Grade de Estados Unidos en USD. .... | 15        |
| Bonos corporativos High Yield de Estados Unidos en USD. ....       | 17        |
| Bonos corporativos Investment Grade de Europa en EUR.....          | 19        |
| Bonos corporativos High Yield de Europa en EUR.....                | 21        |
| Bonos corporativos Investment Grade de China en CNY.....           | 23        |
| Bonos corporativos High Yield de China en CNY.....                 | 25        |

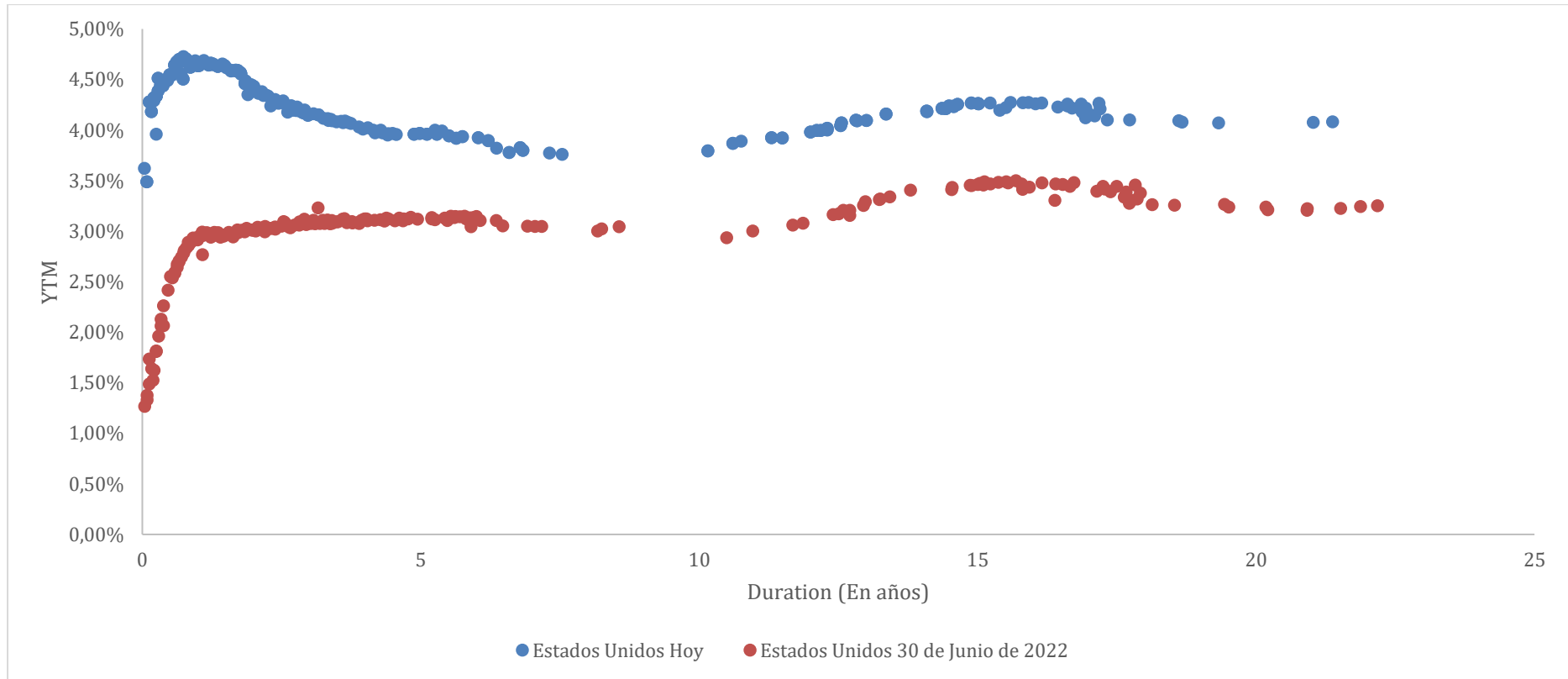
# Curvas de tasas soberanas

## Curvas de tasas soberanas de América Latina en USD

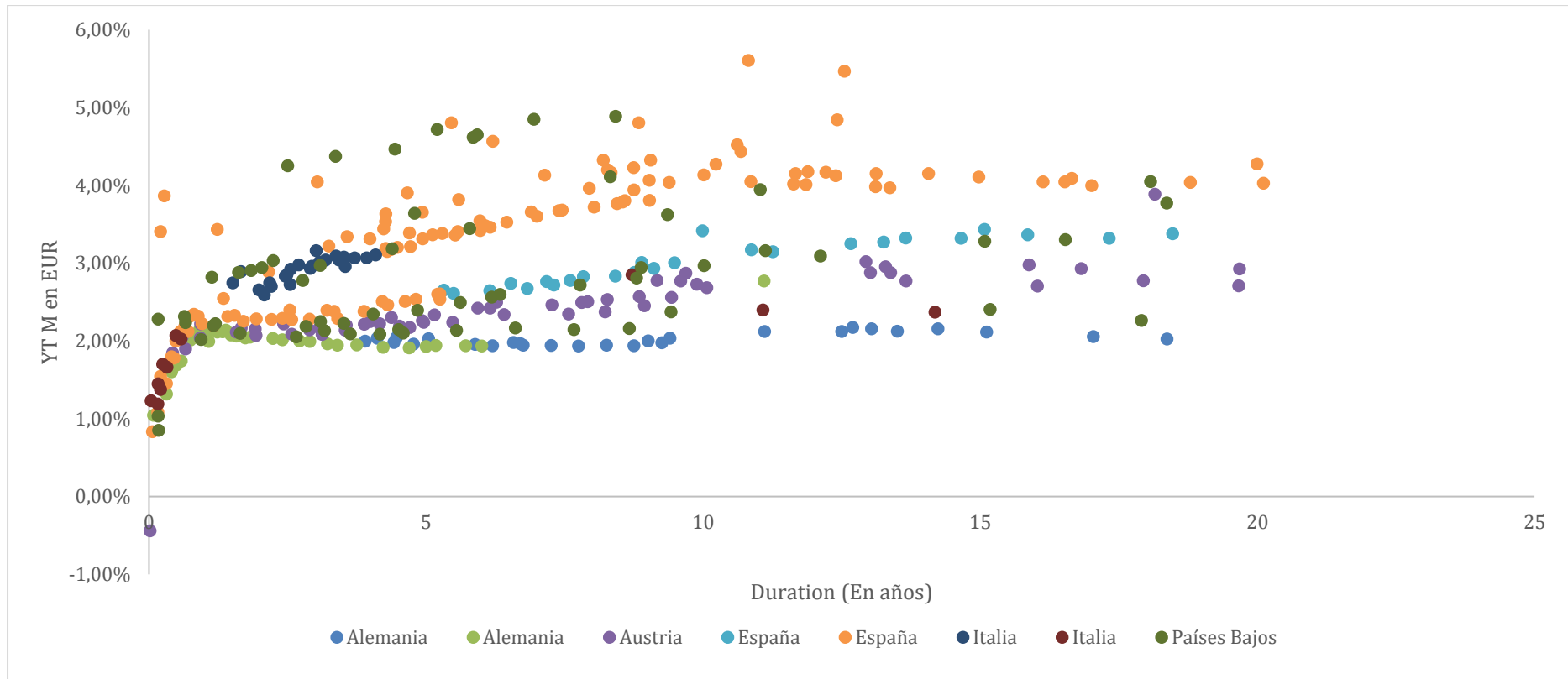


TARALLO S.A. ALyC y AN Propio N° 198 de CNV  
Corrientes 730 Piso 4 Oficina A – S2000CTT – Rosario – Argentina

## Curvas de tasas soberanas de Estados Unidos

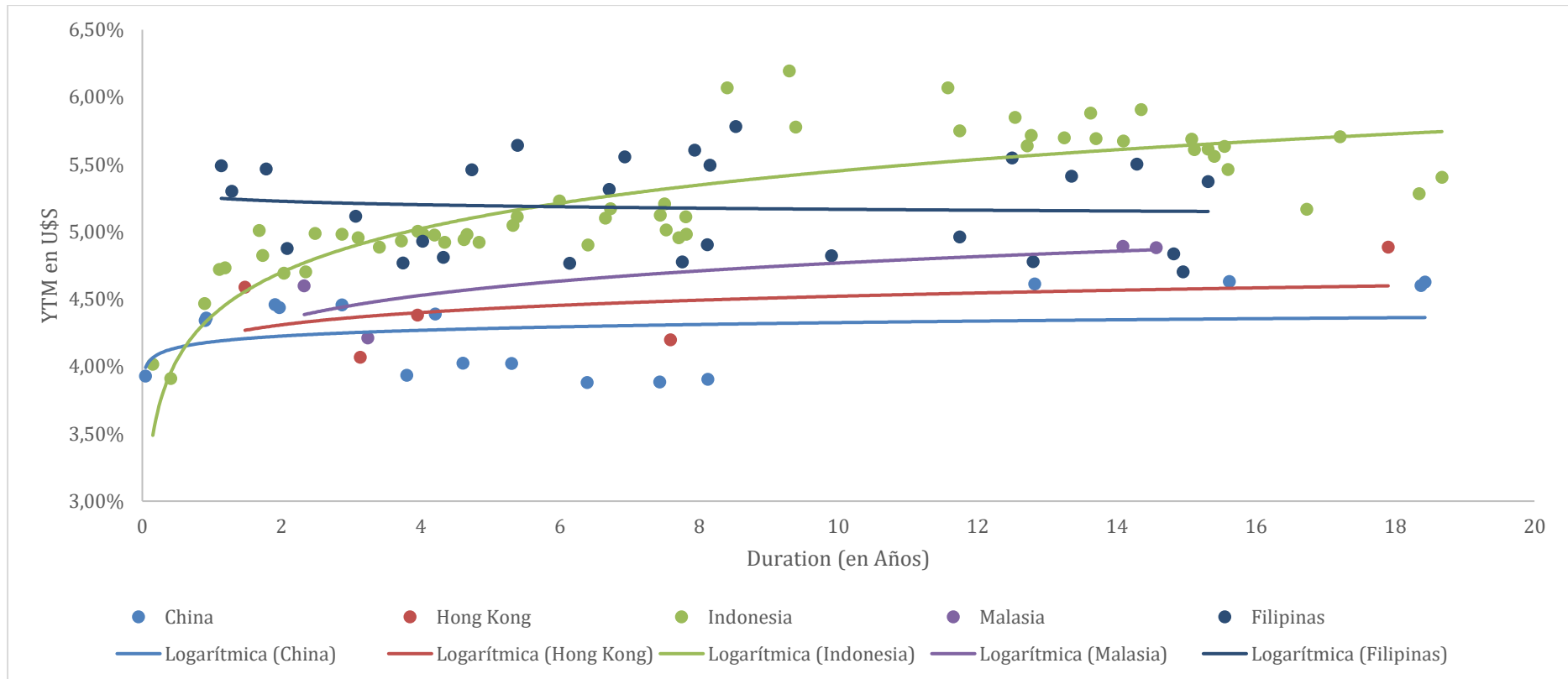


## Curvas de tasas soberanas países europeos en EUR



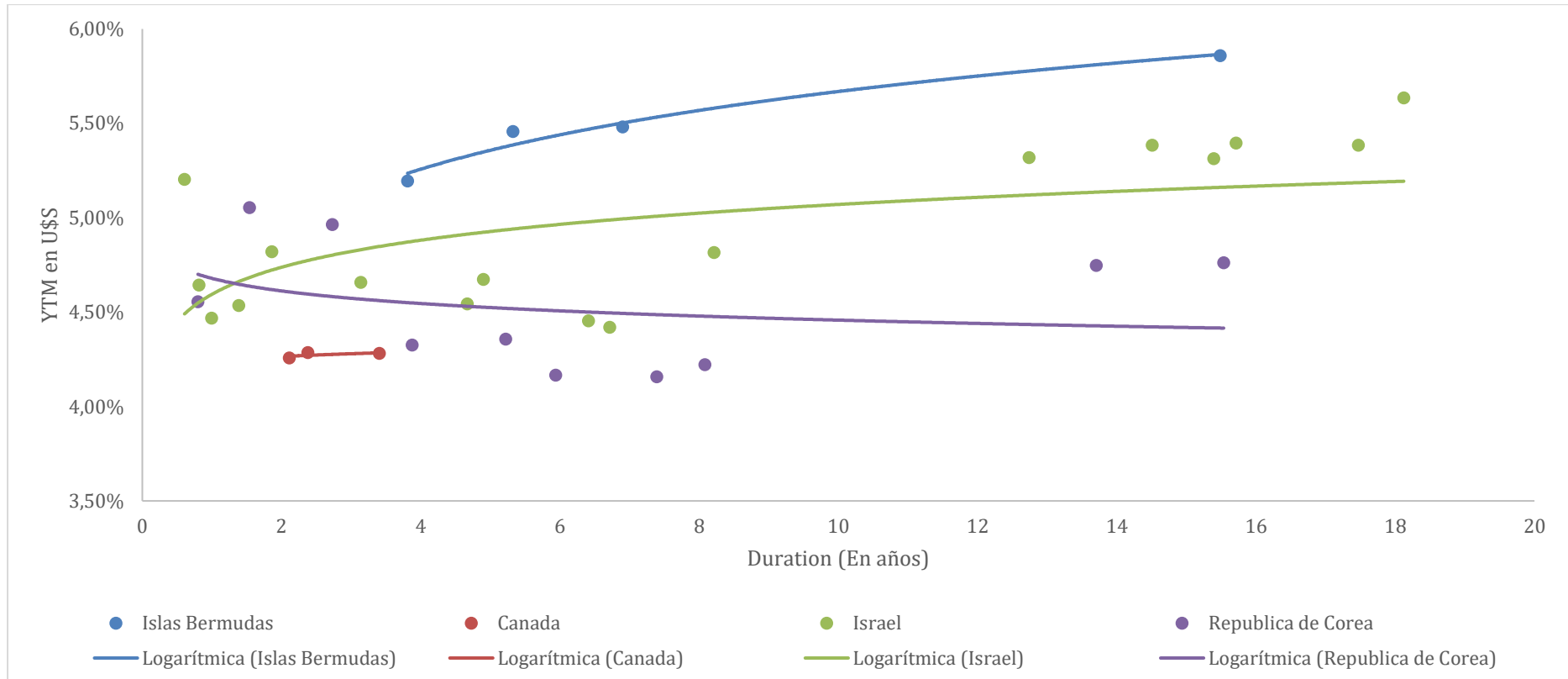
TARALLO S.A. ALyC y AN Propio N° 198 de CNV  
Corrientes 730 Piso 4 Oficina A – S2000CTT – Rosario – Argentina

## Curvas de tasas soberanas países asiáticos, excluyendo a Japón, en USD



TARALLO S.A. ALyC y AN Propio N° 198 de CNV  
Corrientes 730 Piso 4 Oficina A – S2000CTT – Rosario – Argentina

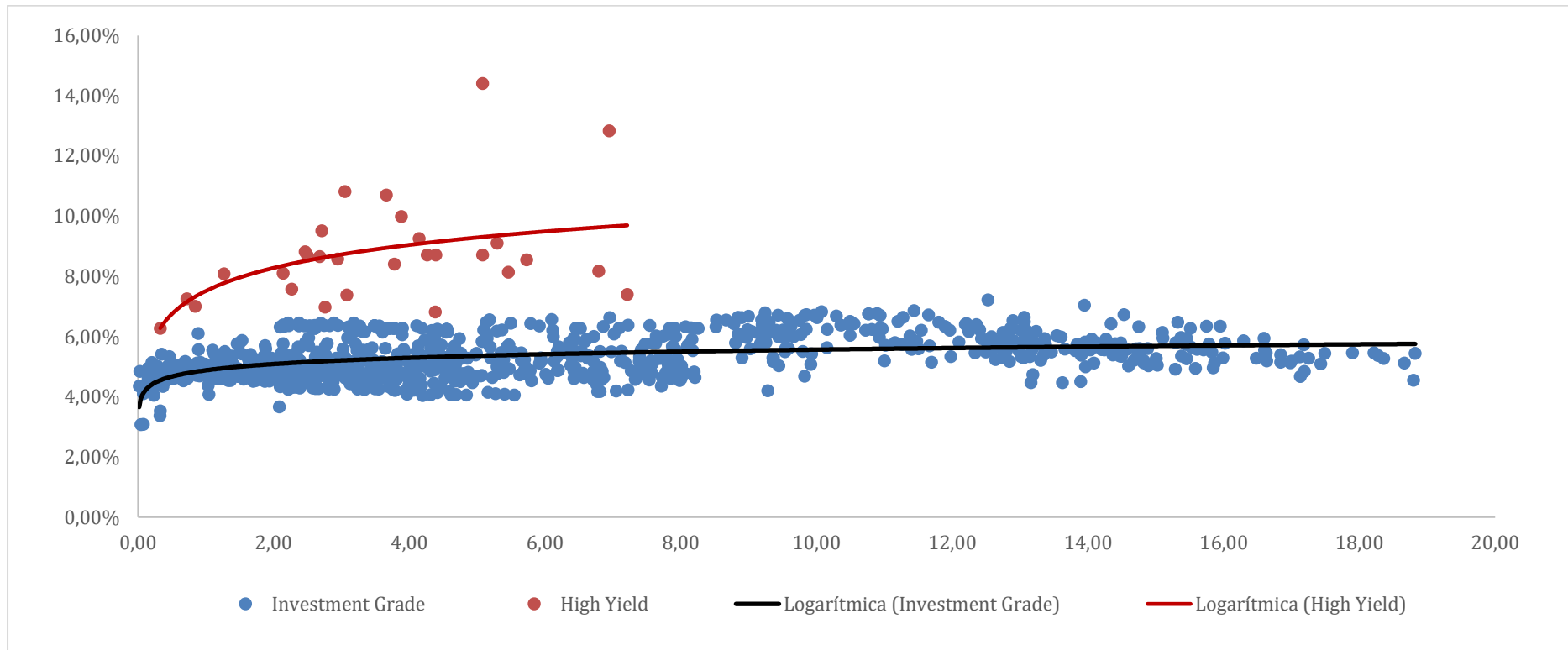
## Curvas de tasas soberanas países desarrollados, excluyendo Europa y Estados Unidos, en USD



TARALLO S.A. ALyC y AN Propio N° 198 de CNV  
Corrientes 730 Piso 4 Oficina A – S2000CTT – Rosario – Argentina

# Curvas de tasas por sector en Estados Unidos

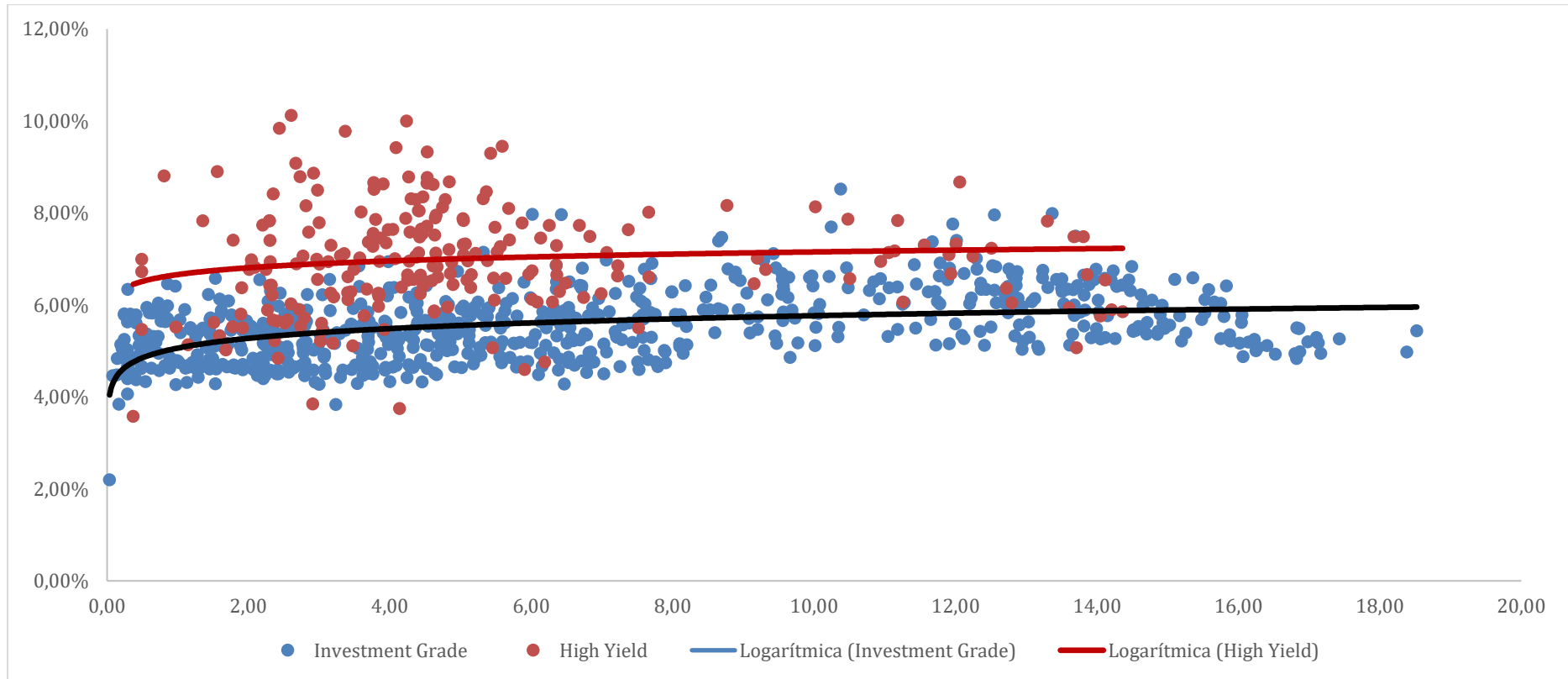
## Curvas de tasas Sector Financiero Estados Unidos



TARALLO S.A. ALyC y AN Propio N° 198 de CNV  
Corrientes 730 Piso 4 Oficina A – S2000CTT – Rosario – Argentina

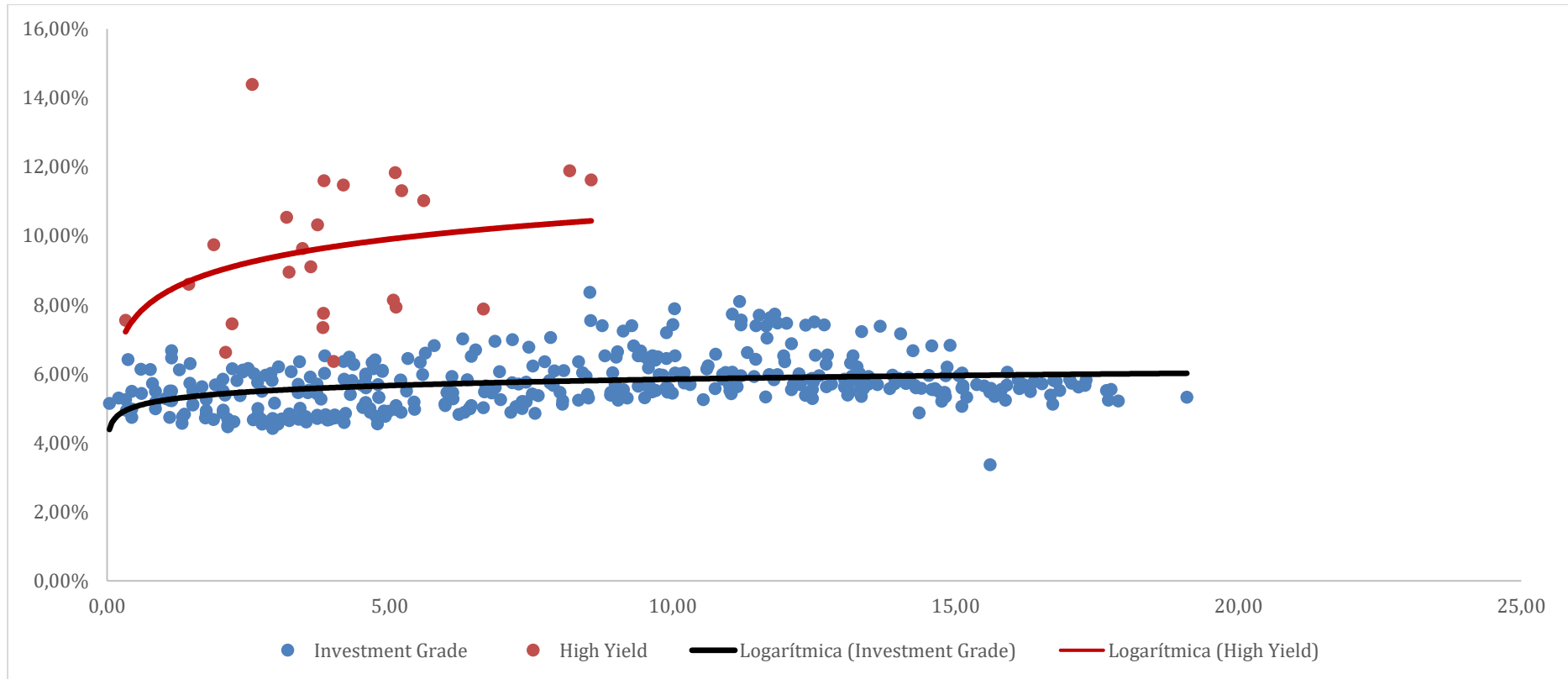


## Curvas de tasas Sector Industrial Estados Unidos



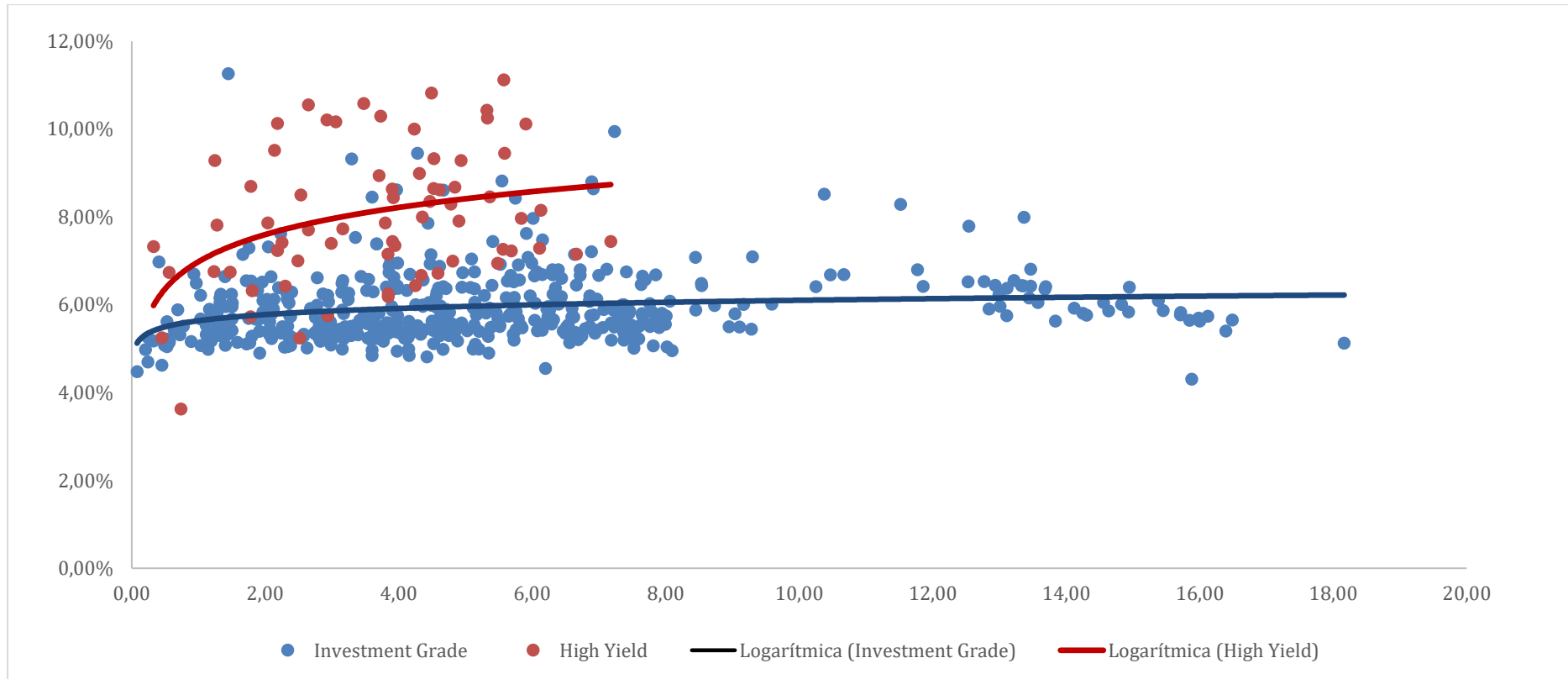
TARALLO S.A. ALyC y AN Propio N° 198 de CNV  
Corrientes 730 Piso 4 Oficina A – S2000CTT – Rosario – Argentina

## Curvas de tasas Sector Telecomunicaciones Estados Unidos



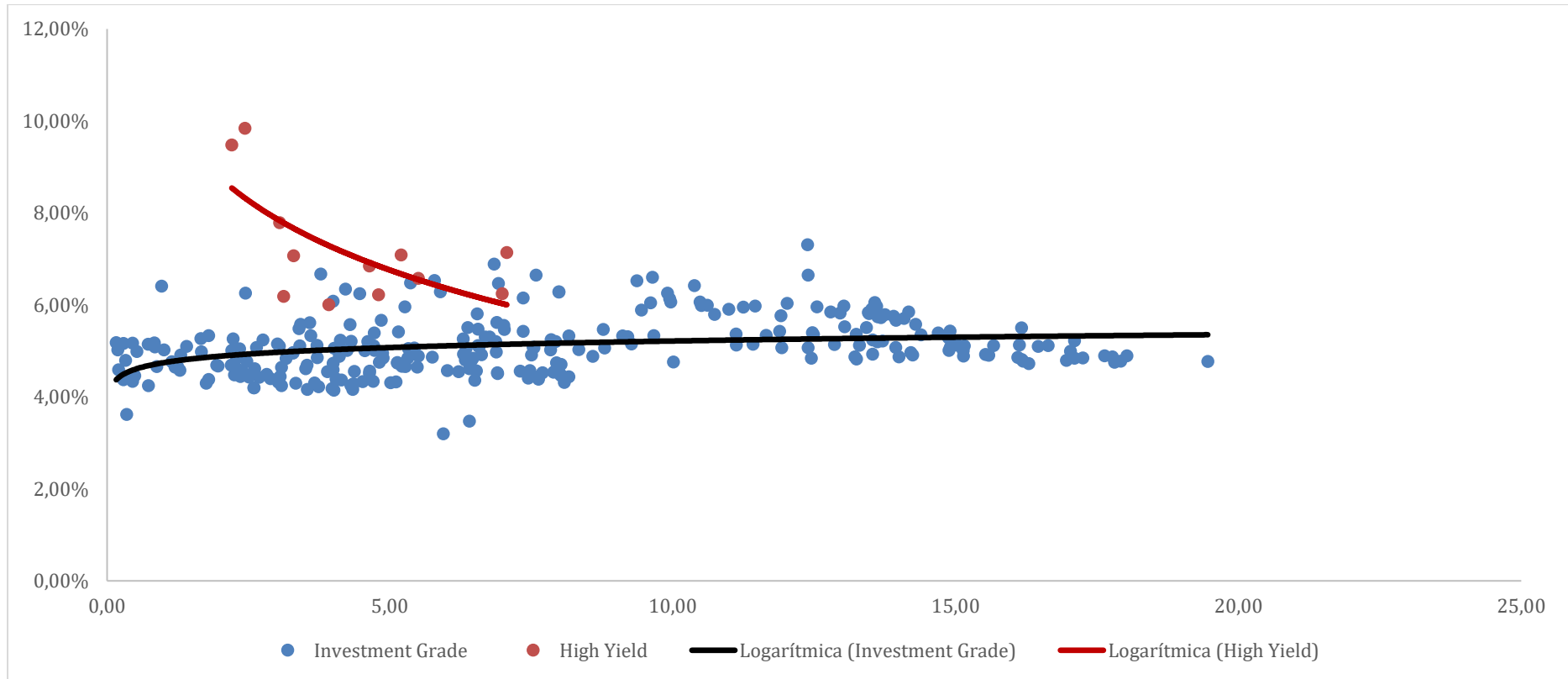
TARALLO S.A. ALyC y AN Propio N° 198 de CNV  
Corrientes 730 Piso 4 Oficina A – S2000CTT – Rosario – Argentina

## Curvas de tasas Sector Real Estate Estados Unidos



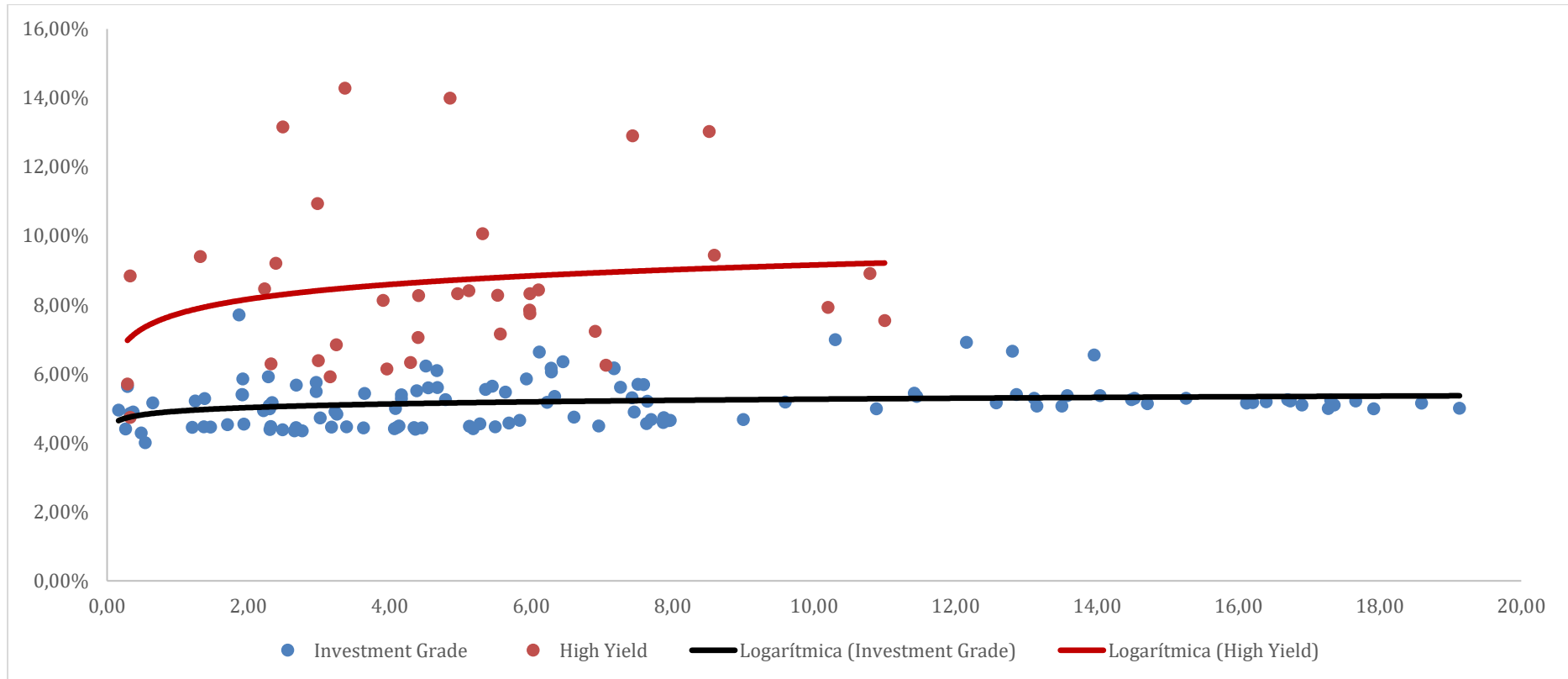
TARALLO S.A. ALyC y AN Propio N° 198 de CNV  
Corrientes 730 Piso 4 Oficina A – S2000CTT – Rosario – Argentina

## Curvas de tasas Sector Consumo Básico Estados Unidos



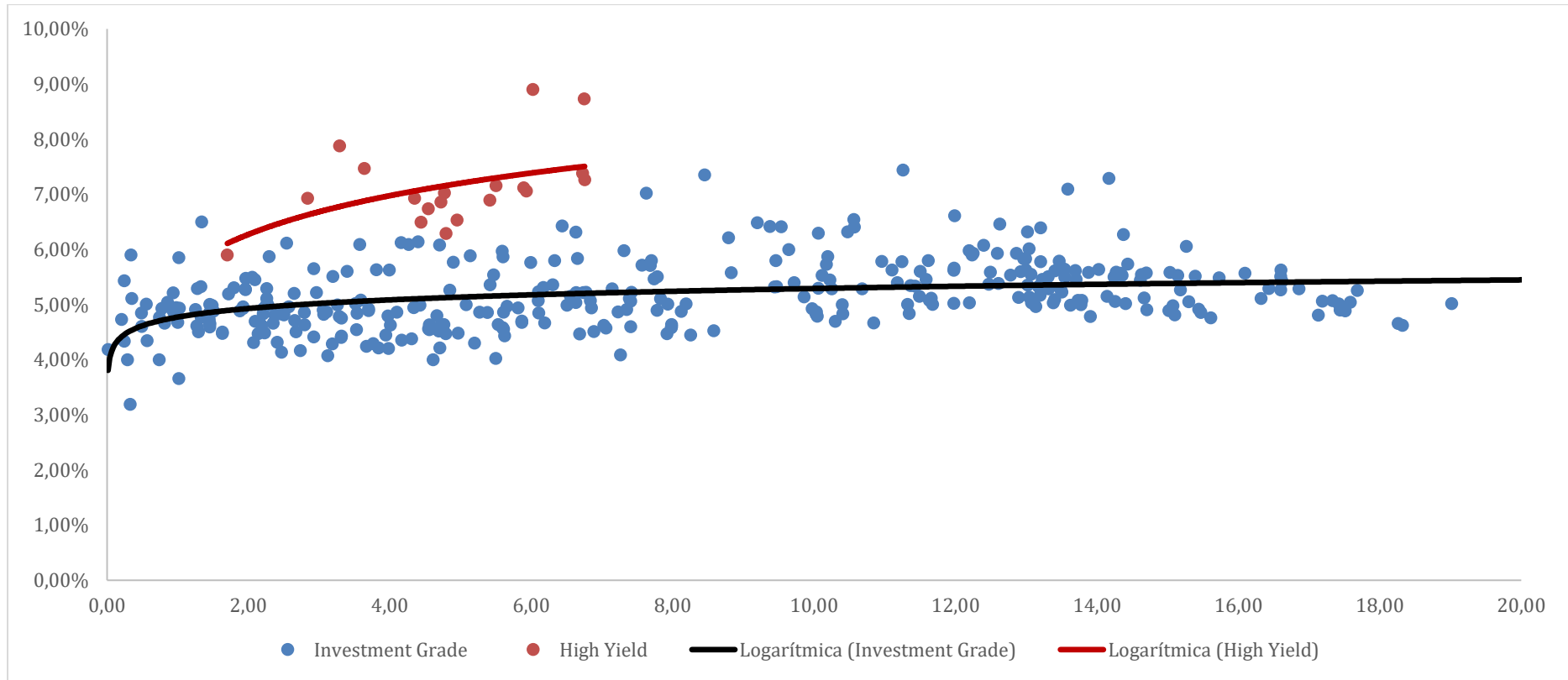
TARALLO S.A. ALyC y AN Propio N° 198 de CNV  
Corrientes 730 Piso 4 Oficina A – S2000CTT – Rosario – Argentina

## Curvas de tasas Sector Consumo Discrecional Estados Unidos



TARALLO S.A. ALyC y AN Propio N° 198 de CNV  
Corrientes 730 Piso 4 Oficina A – S2000CTT – Rosario – Argentina

## Curvas de tasas Sector Salud Estados Unidos



TARALLO S.A. ALyC y AN Propio N° 198 de CNV  
Corrientes 730 Piso 4 Oficina A – S2000CTT – Rosario – Argentina

## Bonos Corporativos en Estados Unidos, Europa y China

### Bonos corporativos Investment Grade de Estados Unidos en USD.

|                                 |            |
|---------------------------------|------------|
| Variación interanual IPC EE.UU. | 7,70% (*)  |
| Último anuncio                  | 10/11/2022 |

| Emisión                                                 | País           | Emisor                            | Volumen en circulación (USD) | Valor nominal / Monto mínimo de negociación | ISIN          | Rentabilidad Indicativa (%) | Duración en años |
|---------------------------------------------------------|----------------|-----------------------------------|------------------------------|---------------------------------------------|---------------|-----------------------------|------------------|
| Wells Fargo, 4.48% 16jan2024, USD                       | Estados Unidos | Wells Fargo                       | 450.000                      | 1.000                                       | USU94974AL37  | 6,632                       | 1,12             |
| AT&T Inc, 7.57% 1feb2024, USD                           | Estados Unidos | AT&T Inc                          | 50.206.000                   | 1.000                                       | US00206RHHQ83 | 6,667                       | 1,14             |
| Capital One Financial Corporation, 4.166% 9may2025, USD | Estados Unidos | Capital One Financial Corporation | 1.000.000.000                | 2.000                                       | US14040HCQ65  | 6,389                       | 1,43             |
| Cadence Bank, 4.125% 20nov2029, USD                     | Estados Unidos | Cadence Bank                      | 300.000.000                  | 1.000                                       | US05971JAA07  | 6,956                       | 1,91             |
| Union Carbide, 6.79% 1jun2025, USD                      | Estados Unidos | Union Carbide                     | 250.000.000                  | 1.000                                       | US905581AQ72  | 6,080                       | 2,28             |
| UMB Financial, 3.7% 17sep2030, USD                      | Estados Unidos | UMB Financial                     | 200.000.000                  | 2.000                                       | US902788AA60  | 6,122                       | 2,70             |
| Arrow Electronics, 7.5% 15jan2027, USD                  | Estados Unidos | Arrow Electronics                 | 200.000.000                  | 1.000                                       | US042735AK67  | 6,021                       | 3,54             |
| Discover Financial, 4.1% 9feb2027, USD                  | Estados Unidos | Discover Financial                | 1.000.000.000                | 2.000                                       | US254709AM01  | 6,329                       | 3,81             |
| Brunswick Corp., 7.125% 1aug2027, USD                   | Estados Unidos | Brunswick Corp.                   | 199.100.000                  | 1.000                                       | US117043AG45  | 6,196                       | 3,96             |
| Devon Energy, 7.5% 15sep2027, USD                       | Estados Unidos | Devon Energy                      | 73.289.000                   | 1.000                                       | US812007AE21  | 6,376                       | 4,06             |
| Cox Communications, 6.95% 15jan2028, USD                | Estados Unidos | Cox Communications                | 82.212.000                   | 1.000                                       | US22404QAG38  | 6,481                       | 4,28             |

TARALLO S.A. ALyC y AN Propio N° 198 de CNV  
Corrientes 730 Piso 4 Oficina A – S2000CTT – Rosario – Argentina

|                                                             |                |                                        |             |       |              |       |      |
|-------------------------------------------------------------|----------------|----------------------------------------|-------------|-------|--------------|-------|------|
| Kinder Morgan, 7.25% 1mar2028, USD                          | Estados Unidos | Kinder Morgan                          | 32.004.000  | 1.000 | US482620AW10 | 6,489 | 4,38 |
| Continental Resources, 4.375% 15jan2028, USD                | Estados Unidos | Continental Resources                  | 300.000     | 2.000 | USU21180AF87 | 6,491 | 4,52 |
| Healthcare Trust, 3.625% 15jan2028, USD                     | Estados Unidos | Healthcare Trust                       | 290.236.000 | 2.000 | US42225UAK07 | 6,568 | 4,67 |
| SVB Financial Group, 2.1% 15may2028, USD                    | Estados Unidos | SVB Financial Group                    | 500.000.000 | 2.000 | US78486QAH48 | 6,253 | 5,11 |
| STORE Capital, 4.625% 15mar2029, USD                        | Estados Unidos | STORE Capital                          | 350.000.000 | 2.000 | US862121AB61 | 6,442 | 5,40 |
| Invitation Homes Operating Partnership, 2.3% 15nov2028, USD | Estados Unidos | Invitation Homes Operating Partnership | 600.000.000 | 2.000 | US46188BAB80 | 6,444 | 5,50 |
| Edison International, 6.95% 15nov2029, USD                  | Estados Unidos | Edison International                   | 550.000.000 | 2.000 | US281020AW79 | 6,370 | 5,60 |
| BNY Mellon, 1.9% 25jan2029, USD (J)                         | Estados Unidos | BNY Mellon                             | 400.000.000 | 1.000 | US06406RAZ01 | 6,163 | 5,70 |
| Conagra Brands, 8.25% 15sep2030, USD                        | Estados Unidos | Conagra Brands                         | 300.000.000 | 1.000 | US205887AX04 | 6,285 | 5,89 |



## Bonos corporativos High Yield de Estados Unidos en USD.

|                                 |            |
|---------------------------------|------------|
| Variación interanual IPC EE.UU. | 7,70% (*)  |
| Último anuncio                  | 10/11/2022 |

| Emisión                                          | País           | Emisor                     | Volumen en circulación (USD) | Valor nominal / Monto mínimo de negociación | ISIN         | Rentabilidad Indicativa (%) | Duración en años |
|--------------------------------------------------|----------------|----------------------------|------------------------------|---------------------------------------------|--------------|-----------------------------|------------------|
| Mauser Packaging Solutions, 8.5% 15apr2024, USD  | Estados Unidos | Mauser Packaging Solutions | 150.000.000                  | 2.000                                       | USU5763HAA33 | 11,761                      | 1,33             |
| Trident TPI Holdings, 9.25% 1aug2024, USD        | Estados Unidos | Trident TPI Holdings       | 345.000.000                  | 1.000                                       | USU89588AB03 | 13,519                      | 1,55             |
| CSI Compressco, 7.5% 1apr2025, USD               | Estados Unidos | CSI Compressco             | 350.000.000                  | 2.000                                       | USU1289BAA09 | 12,451                      | 2,16             |
| LifePoint Health, 6.75% 15apr2025, USD           | Estados Unidos | LifePoint Health           | 600.000.000                  | 2.000                                       | USU53039AG58 | 12,225                      | 2,21             |
| Enova International, 8.5% 15sep2025, USD         | Estados Unidos | Enova International        | 375.000.000                  | 2.000                                       | USU29298AC74 | 12,118                      | 2,49             |
| New Residential Investment, 6.25% 15oct2025, USD | Estados Unidos | Rithm Capital              | 550.000.000                  | 2.000                                       | USU65228AA34 | 10,548                      | 2,64             |
| STL Holding Co, 7.5% 15feb2026, USD              | Estados Unidos | STL Holding Co             | 225.000.000                  | 2.000                                       | USU8597WAA63 | 13,126                      | 2,82             |
| Cinemark USA, 5.875% 15mar2026, USD              | Estados Unidos | Cinemark USA               | 405.000.000                  | 1.000                                       | USU17176AK19 | 10,933                      | 2,98             |
| ATP Tower Holdings, 4.05% 27apr2026, USD         | Estados Unidos | ATP Tower Holdings         | 375.000.000                  | 200.000                                     | USP1000PAA32 | 10,535                      | 3,18             |
| LABL, 10.5% 15jul2027, USD                       | Estados Unidos | LABL                       | 690.000.000                  | 2.000                                       | USU5022DAA91 | 12,908                      | 3,58             |
| Royal Caribbean Cruises, 11.625% 15aug2027, USD  | Estados Unidos | Royal Caribbean Cruises    | 1.250.000.000                | 2.000                                       | USV7780TAJ26 | 10,960                      | 3,65             |
| Advisor Group Holdings, 10.75% 1aug2027, USD     | Estados Unidos | Advisor Group Holdings     | 350.000.000                  | 2.000                                       | USU0075AAA26 | 10,704                      | 3,66             |
| Zayo Group Holdings, 4%                          | Estados Unidos | Zayo Group                 |                              |                                             | USU98831AA59 | 11,597                      | 3,84             |

TARALLO S.A. ALyC y AN Propio N° 198 de CNV  
Corrientes 730 Piso 4 Oficina A – S2000CTT – Rosario – Argentina

|                                                 |                |                            |               |         |              |        |      |
|-------------------------------------------------|----------------|----------------------------|---------------|---------|--------------|--------|------|
| 1mar2027, USD                                   | Unidos         | Holdings                   | 1.500.000.000 | 2.000   |              |        |      |
| Illuminate Buyer, 9% 1jul2028, USD              | Estados Unidos | Illuminate Buyer           | 460.000.000   | 2.000   | USU45056AA33 | 14,311 | 4,17 |
| CSC Holdings, 7.5% 1apr2028, USD                | Estados Unidos | CSC Holdings               | 1.045.882.000 | 200.000 | USU2285XAN67 | 13,231 | 4,28 |
| NFP Corp, 6.875% 15aug2028, USD                 | Estados Unidos | NFP Corp                   | 2.075.000.000 | 2.000   | USU65103AF70 | 10,334 | 4,61 |
| Xerox Holdings Corporation, 5.5% 15aug2028, USD | Estados Unidos | Xerox Holdings Corporation | 750.000.000   | 2.000   | USU98401AB58 | 10,262 | 4,76 |
| Coinbase Global, 3.375% 1oct2028, USD           | Estados Unidos | Coinbase Global            | 1.000.000.000 | 2.000   | USU19328AA89 | 14,406 | 5,08 |
| Lumen Technologies, 4.5% 15jan2029, USD         | Estados Unidos | Lumen Technologies         | 1.000.000.000 | 1.000   | USU1566PAD79 | 11,834 | 5,09 |
| Sinclair Television Group, 5.5% 1mar2030, USD   | Estados Unidos | Sinclair Television Group  | 500.000.000   | 2.000   | USU8275QAJ95 | 11,020 | 5,60 |

## Bonos corporativos Investment Grade de Europa en EUR.

|                               |            |
|-------------------------------|------------|
| Variación interanual IPC U.E. | 10,60% (*) |
| Último anuncio                | 17/11/2022 |

| Emisión                                          | País         | Emisor                     | Volumen en circulación (EUR) | Valor nominal / Monto mínimo de negociación | ISIN         | Rentabilidad Indicativa (%) | Duración en años |
|--------------------------------------------------|--------------|----------------------------|------------------------------|---------------------------------------------|--------------|-----------------------------|------------------|
| Heineken, 3.5% 19mar2024, EUR                    | Países Bajos | Heineken                   | 500.000.000                  | 1.000                                       | XS0758420748 | 2,578                       | 1,31             |
| Stellantis, 2% 23mar2024, EUR (9)                | Países Bajos | Stellantis                 | 700.000.000                  | 1.000                                       | FR0013245586 | 2,922                       | 1,33             |
| Bank Nederlandse Gemeenten, 0.05% 13jul2024, EUR | Países Bajos | Bank Nederlandse Gemeenten | 1.000.000.000                | 1.000                                       | XS1445725218 | 2,539                       | 1,66             |
| Cades, 1.375% 25nov2024, EUR                     | Francia      | Cades                      | 6.250.000.000                | 1.000                                       | FR0012159812 | 2,662                       | 1,99             |
| NRW.BANK, 0% 17feb2025, EUR (17L, 3106D)         | Alemania     | NRW.BANK                   | 699.107.000                  | 1.000                                       | DE000NWB17L1 | 2,673                       | 2,26             |
| ABN AMRO, 1% 16apr2025, EUR                      | Países Bajos | ABN AMRO                   | 1.450.000.000                | 1.000                                       | XS1218821756 | 2,694                       | 2,39             |
| Deutsche Bank, 1.375% 10jun2026, EUR             | Alemania     | Deutsche Bank              | 500.000.000                  | 1.000                                       | DE000DL19VD6 | 3,733                       | 2,53             |
| RCI Banque, 0.5% 14jul2025, EUR (329)            | Francia      | RCI Banque                 | 750.000.000                  | 1.000                                       | FR0014007KL5 | 3,834                       | 2,64             |
| Banco Santander, 1.745% 17sep2025, EUR           | España       | Banco Santander            | 90.000.000                   | 1.000                                       | XS1880462152 | 3,915                       | 2,73             |
| Fresenius SE, 0% 1oct2025, EUR (1644D)           | Alemania     | Fresenius SE               | 500.000.000                  | 1.000                                       | XS2325562424 | 3,730                       | 2,88             |
| Rabobank, 1.25% 23mar2026, EUR                   | Países Bajos | Rabobank                   | 2.000.000.000                | 1.000                                       | XS1382784509 | 2,904                       | 3,27             |
| LBBW, 0.375% 13apr2026, EUR (5559)               | Alemania     | LBBW                       | 1.500.000.000                | 1.000                                       | DE000A13R9M1 | 2,594                       | 3,38             |
| BASF, 0.75% 10nov2026, EUR                       | Alemania     | BASF                       | 500.000.000                  | 1.000                                       | DE000A188WW1 | 2,701                       | 3,94             |

TARALLO S.A. ALyC y AN Propio N° 198 de CNV  
Corrientes 730 Piso 4 Oficina A – S2000CTT – Rosario – Argentina

|                                                              |          |                                   |               |       |              |       |      |
|--------------------------------------------------------------|----------|-----------------------------------|---------------|-------|--------------|-------|------|
| Mercedes-Benz Group, 0.375%<br>8nov2026, EUR (84)            | Alemania | Mercedes-Benz<br>Group            | 1.000.000.000 | 1.000 | DE000A2YNZW8 | 2,635 | 3,96 |
| Deutsche Bahn, 0.5% 9apr2027,<br>EUR                         | Alemania | Deutsche Bahn                     | 900.000.000   | 1.000 | XS2152932542 | 2,785 | 4,34 |
| Instituto de Credito Oficial, 0%<br>30apr2027, EUR (2139D)   | España   | Instituto de Credito<br>Oficial   | 500.000.000   | 1.000 | XS2356033147 | 2,688 | 4,45 |
| Lanxess AG, 0% 8sep2027, EUR<br>(2191D)                      | Alemania | Lanxess AG                        | 500.000.000   | 1.000 | XS2383886947 | 3,744 | 4,81 |
| Landwirtschaftliche Rentenbank, 0%<br>22sep2027, EUR (2556D) | Alemania | Landwirtschaftliche<br>Rentenbank | 2.000.000.000 | 1.000 | XS2233120554 | 2,500 | 4,85 |
| HeidelbergCement, 1.125%<br>1dec2027, EUR                    | Alemania | HeidelbergCement                  | 750.000.000   | 1.000 | XS2018637327 | 3,308 | 4,87 |
| DZ Hyp, 0.01% 12nov2027, EUR<br>(1218)                       | Alemania | DZ Hyp                            | 500.000.000   | 1.000 | DE000A2TSDY0 | 2,689 | 4,99 |

## Bonos corporativos High Yield de Europa en EUR.

|                               |            |
|-------------------------------|------------|
| Variación interanual IPC U.E. | 10,60% (*) |
| Último anuncio                | 17/11/2022 |

| Emisión                                               | País            | Emisor                             | Volumen en circulación (EUR) | Valor nominal / Monto mínimo de negociación | ISIN         | Rentabilidad Indicativa (%) | Duración en años |
|-------------------------------------------------------|-----------------|------------------------------------|------------------------------|---------------------------------------------|--------------|-----------------------------|------------------|
| Jaguar Land Rover, 2.2% 15jan2024, EUR                | El Reino Unido  | Jaguar Land Rover                  | 650.000.000                  | 100.000                                     | XS1551347393 | 6,683                       | 1,13             |
| Energo - Pro, 4.5% 4may2024, EUR                      | República Checa | Energo - Pro                       | 250.000.000                  | 100.000                                     | XS1816296062 | 8,937                       | 1,42             |
| Transportes Aereos Portugueses, 5.625% 2dec2024, EUR  | Portugal        | Transportes Aereos Portugueses     | 375.000.000                  | 100.000                                     | PTTAPDOM0005 | 8,271                       | 1,89             |
| IM Group, 6.625% 1mar2025, EUR                        | Francia         | IM Group                           | 200.000.000                  | 100.000                                     | XS2114146181 | 8,524                       | 2,11             |
| Grifols, 3.2% 1may2025, EUR                           | España          | Grifols                            | 1.000.000.000                | 100.000                                     | XS1598757760 | 6,666                       | 2,34             |
| ams-OSRAM AG, 6% 31jul2025, EUR                       | Austria         | ams-OSRAM AG                       | 850.000.000                  | 100.000                                     | XS2195511006 | 8,146                       | 2,45             |
| National Bank of Greece, 2.75% 8oct2026, EUR          | Grecia          | National Bank of Greece            | 500.000.000                  | 100.000                                     | XS2237982769 | 6,853                       | 2,81             |
| Goldstory, 5.375% 1mar2026, EUR                       | Francia         | Goldstory                          | 370.000.000                  | 100.000                                     | XS2294854745 | 8,006                       | 2,97             |
| Techem Verwaltungsgesellschaft 674, 6% 30jul2026, EUR | Alemania        | Techem Verwaltungsgesellschaft 674 | 363.900.000                  | 100.000                                     | XS1859258383 | 7,740                       | 3,26             |
| Eurobank, 2% 5may2027, EUR                            | Grecia          | Eurobank                           | 500.000.000                  | 100.000                                     | XS2338193019 | 7,656                       | 3,34             |
| Iliad Holding, 5.125% 15oct2026, EUR                  | Francia         | Iliad Holding                      | 1.100.000.000                | 100.000                                     | XS2397781357 | 6,893                       | 3,57             |
| Promontoria Holding 264, 6.375%                       | Países          | Promontoria Holding                |                              |                                             | XS2442802349 | 8,340                       | 3,70             |

TARALLO S.A. ALyC y AN Propio N° 198 de CNV  
Corrientes 730 Piso 4 Oficina A – S2000CTT – Rosario – Argentina

|                                             |              |                      |               |         |              |       |      |
|---------------------------------------------|--------------|----------------------|---------------|---------|--------------|-------|------|
| 1mar2027, EUR                               | Bajos        | 264                  | 340.000.000   | 100.000 |              |       |      |
| Kapla Holding, 3.375% 15dec2019, EUR        | Francia      | Kapla Holding        | 460.000.000   | 100.000 | XS2010034077 | 7,025 | 3,77 |
| Deutsche Lufthansa, 2.875% 16may2027, EUR   | Alemania     | Deutsche Lufthansa   | 900.000.000   | 100.000 | XS2408458730 | 6,451 | 4,20 |
| Faurecia, 2.375% 15jun2027, EUR             | Francia      | Faurecia             | 890.000.000   | 100.000 | XS2081474046 | 7,037 | 4,29 |
| Intrum, 3% 15sep2027, EUR                   | Suecia       | Intrum               | 850.000.000   | 100.000 | XS2052216111 | 7,689 | 4,47 |
| Atlantia, 1.875% 12feb2028, EUR             | Italia       | Atlantia             | 1.000.000.000 | 100.000 | XS2301390089 | 6,143 | 4,93 |
| Castor, 6% 15feb2029, EUR                   | Italia       | Castor               | 350.000.000   | 100.000 | XS2445836286 | 8,814 | 5,09 |
| UPC Holding, 3.875% 15jun2029, EUR          | Países Bajos | UPC Holding          | 337.854.000   | 100.000 | XS1629969327 | 7,293 | 5,64 |
| Telecom Italia (TIM), 1.625% 18jan2029, EUR | Italia       | Telecom Italia (TIM) | 1.000.000.000 | 100.000 | XS2288109676 | 6,412 | 5,78 |

## Bonos corporativos Investment Grade de China en CNY.

|                                |           |
|--------------------------------|-----------|
| Variación interanual IPC China | 2,10% (*) |
| Último anuncio                 | 9/11/2022 |

| Emisión                                                        | País  | Emisor                                   | Volumen en circulación (CNY) | Valor nominal / Monto mínimo de negociación | ISIN         | Rentabilidad Indicativa (%) | Duración en años |
|----------------------------------------------------------------|-------|------------------------------------------|------------------------------|---------------------------------------------|--------------|-----------------------------|------------------|
| Shougang Group, 4.38% 21nov2023, CNY                           | China | Shougang Group                           | 3.000.000.000                | 100                                         | CND10001ZZB9 | 2,417                       | 0,99             |
| China Construction Bank, 3.3% 26jan2024, CNY                   | China | China Construction Bank                  | 20.000.000.000               | 100                                         | CND100042M63 | 2,547                       | 1,16             |
| Bank of Nanjing, 3.75% 22feb2024, CNY                          | China | Bank of Nanjing                          | 3.000.000.000                | 100                                         | CND10001YNP8 | 2,640                       | 1,23             |
| CBHB, 3.55% 8apr2024, CNY                                      | China | CBHB                                     | 15.000.000.000               | 100                                         | CND100045PB8 | 2,859                       | 1,36             |
| Bank of Communications Financial Leasing, 3.45% 26apr2024, CNY | China | Bank of Communications Financial Leasing | 3.000.000.000                | 100                                         | CND1000475G2 | 2,668                       | 1,41             |
| CNPC, 3.58% 17oct2024, CNY                                     | China | CNPC                                     | 10.000.000.000               | 100                                         | CND10002HPG5 | 2,601                       | 1,89             |
| China Orient Asset Management, 3.25% 5nov2024, CNY             | China | China Orient Asset Management            | 6.000.000.000                | 100                                         | CND10002HYP8 | 3,118                       | 1,94             |
| State Grid Corporation of China, 4.45% 6apr2025, CNY           | China | State Grid Corporation of China          | 5.000.000.000                | 100                                         | CND100002HG5 | 2,643                       | 2,27             |
| Industrial Bank, 2.95% 27may2025, CNY                          | China | Industrial Bank                          | 5.000.000.000                | 100                                         | CND100037XT1 | 2,679                       | 2,44             |
| China Development Bank, 2.89% 22jun2025, CNY                   | China | China Development Bank                   | 98.290.000.000               | 100                                         | CND10003C5P8 | 2,676                       | 2,52             |
| Agricultural Development Bank of                               | China | Agricultural                             | 88.180.000.000               |                                             | CND10005H377 | 2,688                       | 2,62             |

TARALLO S.A. ALyC y AN Propio N° 198 de CNV  
Corrientes 730 Piso 4 Oficina A – S2000CTT – Rosario – Argentina

|                                                                                |       |                                                          |                 |     |              |       |      |
|--------------------------------------------------------------------------------|-------|----------------------------------------------------------|-----------------|-----|--------------|-------|------|
| China (ADBC), 2.46% 27jul2025, CNY                                             |       | Development Bank of China (ADBC)                         |                 | 100 |              |       |      |
| China Exim Bank, 3.87% 14sep2025, CNY                                          | China | China Exim Bank                                          | 116.000.000.000 | 100 | CND100008S02 | 2,643 | 2,72 |
| China Cinda Asset Management, 4.6% 24sep2025, CNY                              | China | China Cinda Asset Management                             | 10.000.000.000  | 100 | CND1000126W8 | 3,162 | 2,73 |
| Guangzhou Metro Group, 3.99% 28apr2026, CNY                                    | China | Guangzhou Metro Group                                    | 200.000.000     | 100 | CND100009SS2 | 2,855 | 3,24 |
| China Huaneng Group, 3.47% 9aug2026, CNY                                       | China | China Huaneng Group                                      | 3.000.000.000   | 100 | CND100017D65 | 2,936 | 3,54 |
| Bank of Ningbo, 4.8% 8dec2027, CNY                                             | China | Bank of Ningbo                                           | 10.000.000.000  | 100 | CND10000L0J4 | 4,765 | 4,42 |
| China Zheshang Bank, 4.8% 15jun2028, CNY                                       | China | China Zheshang Bank                                      | 15.000.000.000  | 100 | CND100010YV2 | 4,544 | 4,94 |
| China Pacific Property Insurance, 4.99% 27jul2028, CNY                         | China | China Pacific Property Insurance                         | 5.000.000.000   | 100 | CND1000172H3 | 4,665 | 5,03 |
| China Great Wall Asset Management, 4.59% 1apr2029, CNY                         | China | China Great Wall Asset Management                        | 5.000.000.000   | 100 | CND100025NZ4 | 4,466 | 5,52 |
| Ping An Property And Casualty Insurance Company Of China, 4.64% 19apr2029, CNY | China | Ping An Property And Casualty Insurance Company Of China | 10.000.000.000  | 100 | CND100026Z01 | 4,207 | 5,57 |
| Bank of Communications, 4.1% 16aug2029, CNY                                    | China | Bank of Communications                                   | 30.000.000.000  | 100 | CND10002F592 | 3,749 | 5,99 |



## Bonos corporativos High Yield de China en CNY.

|                                |           |
|--------------------------------|-----------|
| Variación interanual IPC China | 2,10% (*) |
| Último anuncio                 | 9/11/2022 |

| Emisión                                                             | País  | Emisor                                     | Volumen en circulación (CNY) | Valor nominal / Monto mínimo de negociación | ISIN         | Rentabilidad Indicativa (%) | Duración en años |
|---------------------------------------------------------------------|-------|--------------------------------------------|------------------------------|---------------------------------------------|--------------|-----------------------------|------------------|
| Dalian Deta Holding, 7%<br>24dec2023, CNY                           | China | Dalian Deta Holding                        | 500.000.000                  | 100                                         | CND10001WSY3 | 5,815                       | 1,04             |
| Huai An Traffic Holding, 5.75%<br>30jan2024, CNY                    | China | Huai An Traffic Holding                    | 800.000.000                  | 100                                         | CND10001ZPH7 | 3,080                       | 1,15             |
| Jiangsu Fangyang Group, 6.8%<br>4mar2024, CNY                       | China | Jiangsu Fangyang Group                     | 500.000.000                  | 100                                         | CND100045XH9 | 3,948                       | 1,24             |
| Inner Mongolia Baotou Steel Union,<br>6.1% 22apr2024, CNY           | China | Inner Mongolia Baotou Steel Union          | 2.500.000.000                | 100                                         | CND100027KS1 | 5,782                       | 1,38             |
| ChengDu JingKai GuoTou Investment Group, 5.45%<br>19jun2024, CNY    | China | ChengDu JingKai GuoTou Investment Group    | 500.000.000                  | 100                                         | CND10002H2B1 | 4,132                       | 1,54             |
| Taizhou Huaxin Pharmaceutical Investment, 4.07% 11mar2025, CNY      | China | Taizhou Huaxin Pharmaceutical Investment   | 400.000.000                  | 100                                         | CND10002RZR0 | 3,313                       | 2,20             |
| Putian State-owned Assets Investment, 5.93% 23apr2025, CNY          | China | Putian State-owned Assets Investment       | 500.000.000                  | 100                                         | CND100016MN1 | 3,160                       | 2,28             |
| Mianyang Investment, 3.76%<br>17apr2025, CNY                        | China | Mianyang Investment                        | 1.000.000.000                | 100                                         | CND100034X86 | 3,710                       | 2,31             |
| Huai An Traffic Holding, 3.5%<br>17apr2025, CNY                     | China | Huai An Traffic Holding                    | 1.000.000.000                | 100                                         | CND100034SG5 | 3,396                       | 2,32             |
| Zhangzhou Transportation Development Group, 3.89%<br>12may2025, CNY | China | Zhangzhou Transportation Development Group | 500.000.000                  | 100                                         | CND100037JX2 | 3,027                       | 2,38             |

TARALLO S.A. ALyC y AN Propio N° 198 de CNV  
Corrientes 730 Piso 4 Oficina A – S2000CTT – Rosario – Argentina

|                                                                                 |       |                                                           |               |     |              |       |      |
|---------------------------------------------------------------------------------|-------|-----------------------------------------------------------|---------------|-----|--------------|-------|------|
| Yichang High-tech Investment Development, 4.35% 15jun2025, CNY                  | China | Yichang High-tech Investment Development                  | 1.000.000.000 | 100 | CND10003CLX8 | 3,136 | 2,46 |
| Chengdu Airport Xingcheng Investment Group, 4.39% 21aug2025, CNY                | China | Chengdu Airport Xingcheng Investment Group                | 1.000.000.000 | 100 | CND10003KSV0 | 3,119 | 2,64 |
| Huai An Traffic Holding, 4.2% 23sep2025, CNY                                    | China | Huai An Traffic Holding                                   | 600.000.000   | 100 | CND10003RSN2 | 3,838 | 2,74 |
| Urumqi Gaoxin Investment and Development Group, 4.03% 23sep2025, CNY            | China | Urumqi Gaoxin Investment and Development Group            | 500.000.000   | 100 | CND10003RTH2 | 3,657 | 2,74 |
| Shangrao City Construction Investment & Development Group, 4.97% 29jul2027, CNY | China | Shangrao City Construction Investment & Development Group | 1.000.000.000 | 100 | CND10003HJ14 | 4,388 | 4,26 |
| Shangrao City Construction Investment & Development Group, 5.05% 26aug2027, CNY | China | Shangrao City Construction Investment & Development Group | 700.000.000   | 100 | CND10003L4Q8 | 4,420 | 4,33 |
| Bank of Suzhou, 4.62% 7aug2030, CNY                                             | China | Bank of Suzhou                                            | 4.500.000.000 | 100 | CND10003J923 | 4,055 | 6,62 |
| Yichang High-tech Investment Development, 6.2% 17dec2033, CNY                   | China | Yichang High-tech Investment Development                  | 3.000.000.000 | 100 | CND10001TN81 | 5,801 | 7,96 |

(\*) Las tablas y gráficos son de elaboración propia en base a la información de la base de datos de mercado al 16/11/22. Este informe tiene el mero propósito de brindar información, por lo que no constituye ni una oferta ni una recomendación de compra o venta de los instrumentos financieros en él mencionado.

Fuente Variación IPC:

EE.UU.: <https://es.investing.com/economic-calendar/cpi-733>

U.E.: <https://es.investing.com/economic-calendar/cpi-68>

China: <https://es.investing.com/economic-calendar/chinese-cpi-459>