

## Informe renta fija a nivel mundial (\*)

Fecha 15/09/2022

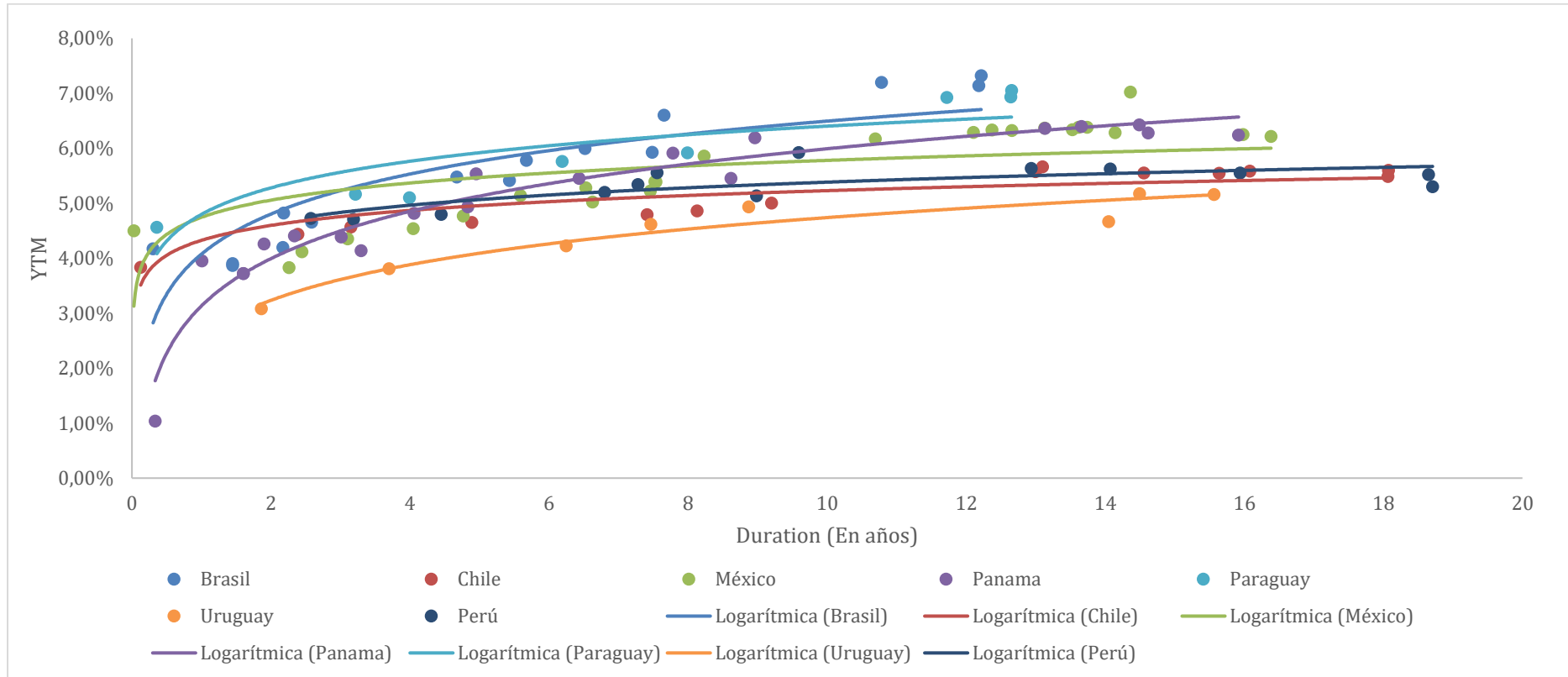
### Índice

|   |          |
|---|----------|
| <b>Curvas de tasas soberanas.....</b>   | <b>3</b> |
| Curvas de tasas soberanas de América Latina en USD.....   | 3        |
| Curvas de tasas soberanas de Estados Unidos.....  | 4        |
| Curvas de tasas soberanas países europeos en USD.....   | 5        |
| Curvas de tasas soberanas países asiáticos, excluyendo a Japón, en USD.....                     | 6        |
| Curvas de tasas soberanas países desarrollados, excluyendo Europa y Estados Unidos, en USD..... | 7        |
| <b>Curvas de tasas por sector en Estados Unidos .....</b>                                       | <b>8</b> |
| Curvas de tasas Sector Financiero Estados Unidos.....   | 8        |
| Curvas de tasas Sector Industrial Estados Unidos.....   | 9        |
| Curvas de tasas Sector Telecomunicaciones Estados Unidos.....                                   | 10       |
| Curvas de tasas Sector Real Estate Estados Unidos.....  | 11       |

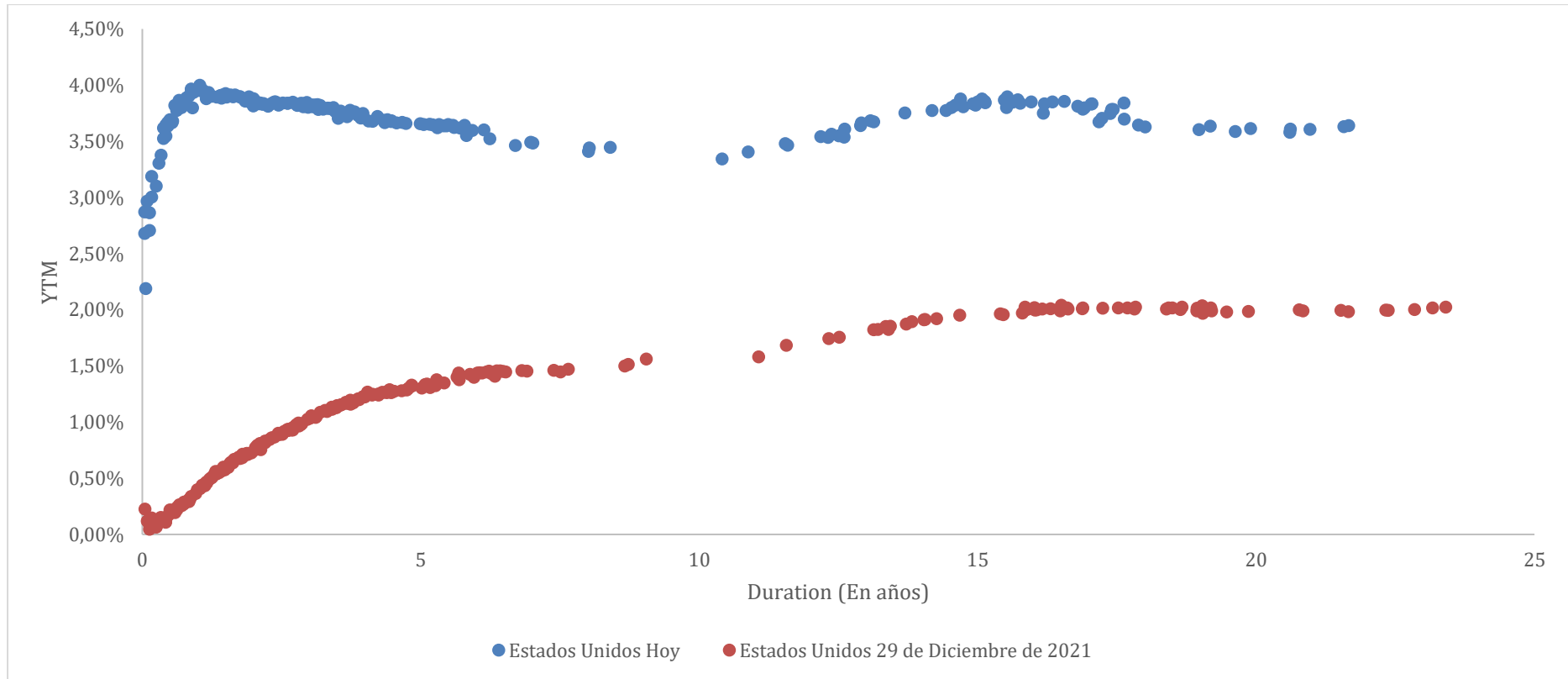
|  |           |
|--|-----------|
| Curvas de tasas Sector Consumo Básico Estados Unidos .....         | 12        |
| Curvas de tasas Sector Consumo Discrecional Estados Unidos.....    | 13        |
| Curvas de tasas Sector Salud Estados Unidos .....                  | 14        |
| <b>Bonos Corporativos en Estados Unidos, Europa y China.....</b>   | <b>15</b> |
| Bonos corporativos Investment Grade de Estados Unidos en USD. .... | 15        |
| Bonos corporativos High Yield de Estados Unidos en USD. ....       | 17        |
| Bonos corporativos Investment Grade de Europa en EUR.....          | 19        |
| Bonos corporativos High Yield de Europa en EUR.....                | 21        |
| Bonos corporativos Investment Grade de China en CNY.....           | 23        |
| Bonos corporativos High Yield de China en CNY.....                 | 25        |

# Curvas de tasas soberanas

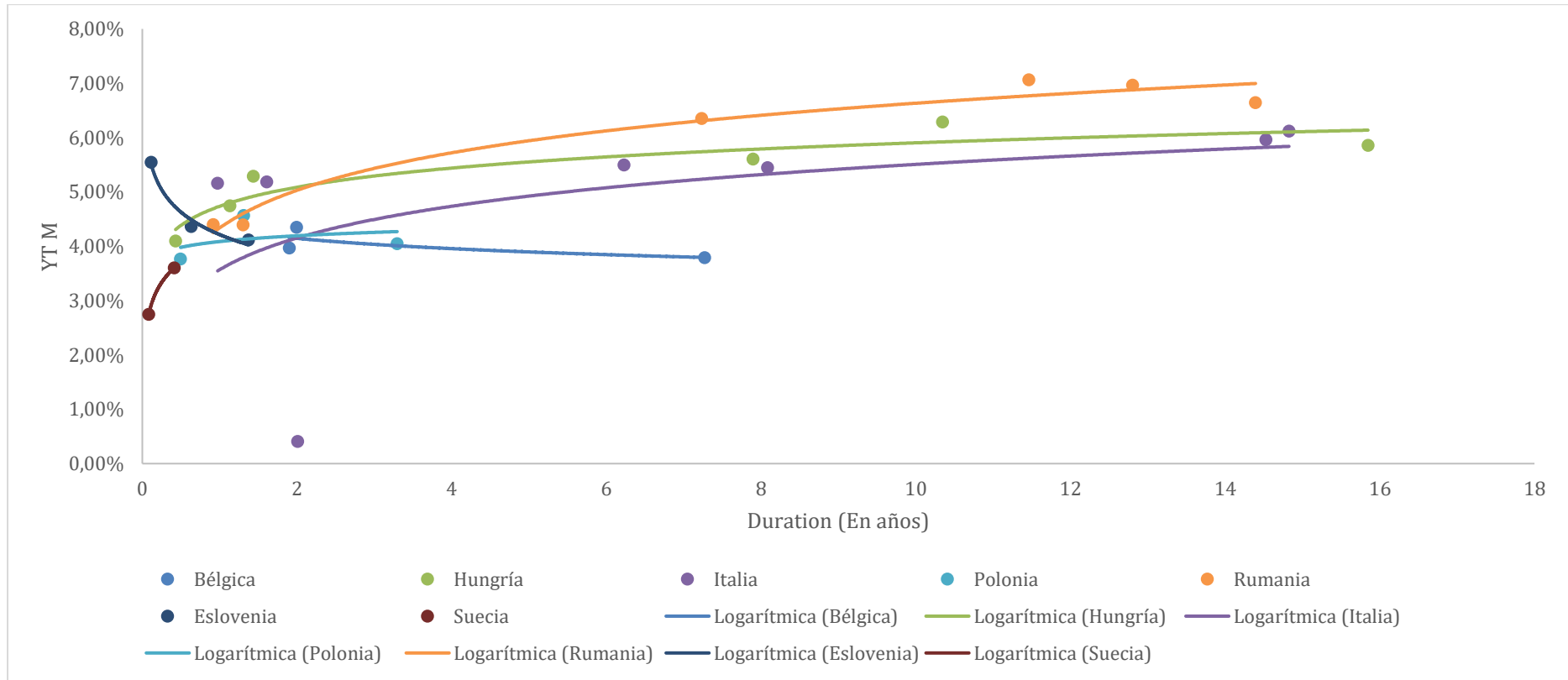
## Curvas de tasas soberanas de América Latina en USD



## Curvas de tasas soberanas de Estados Unidos

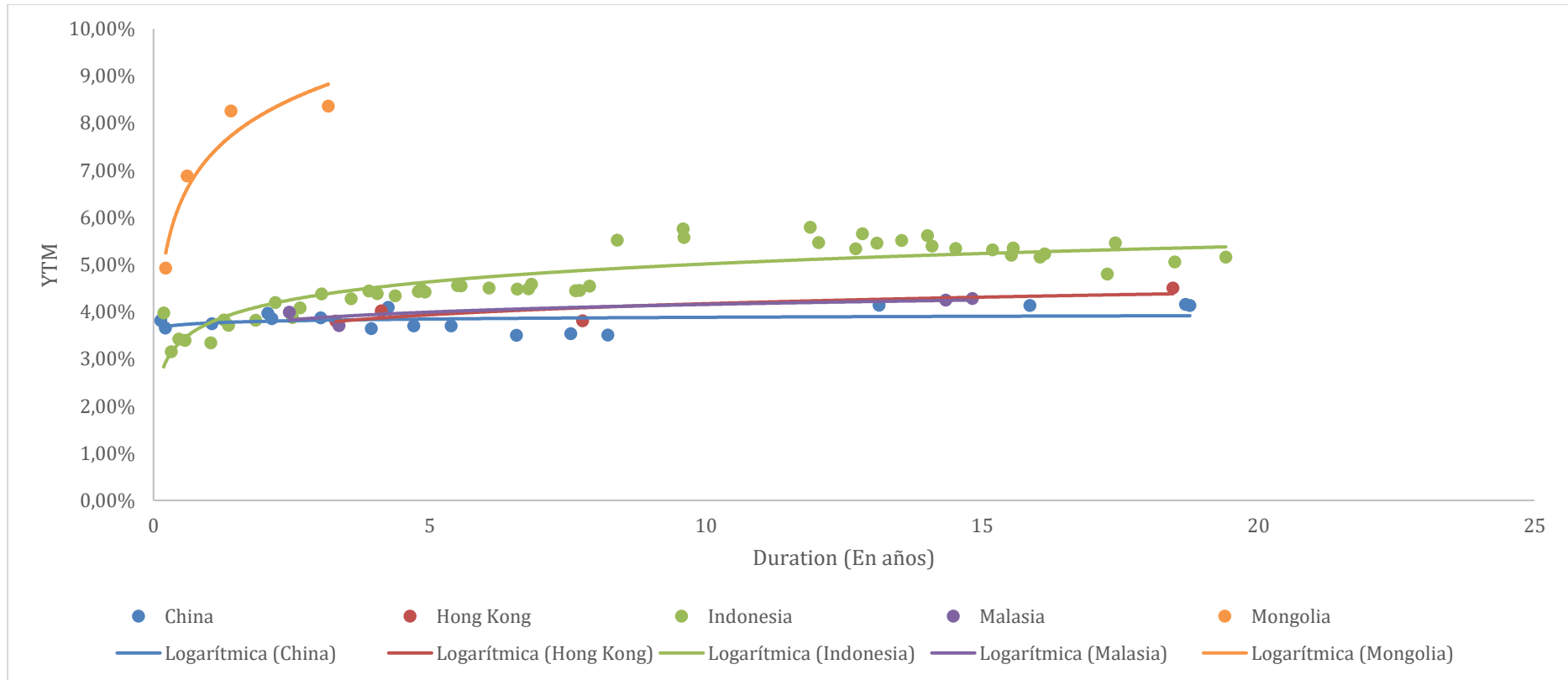


## Curvas de tasas soberanas países europeos en USD

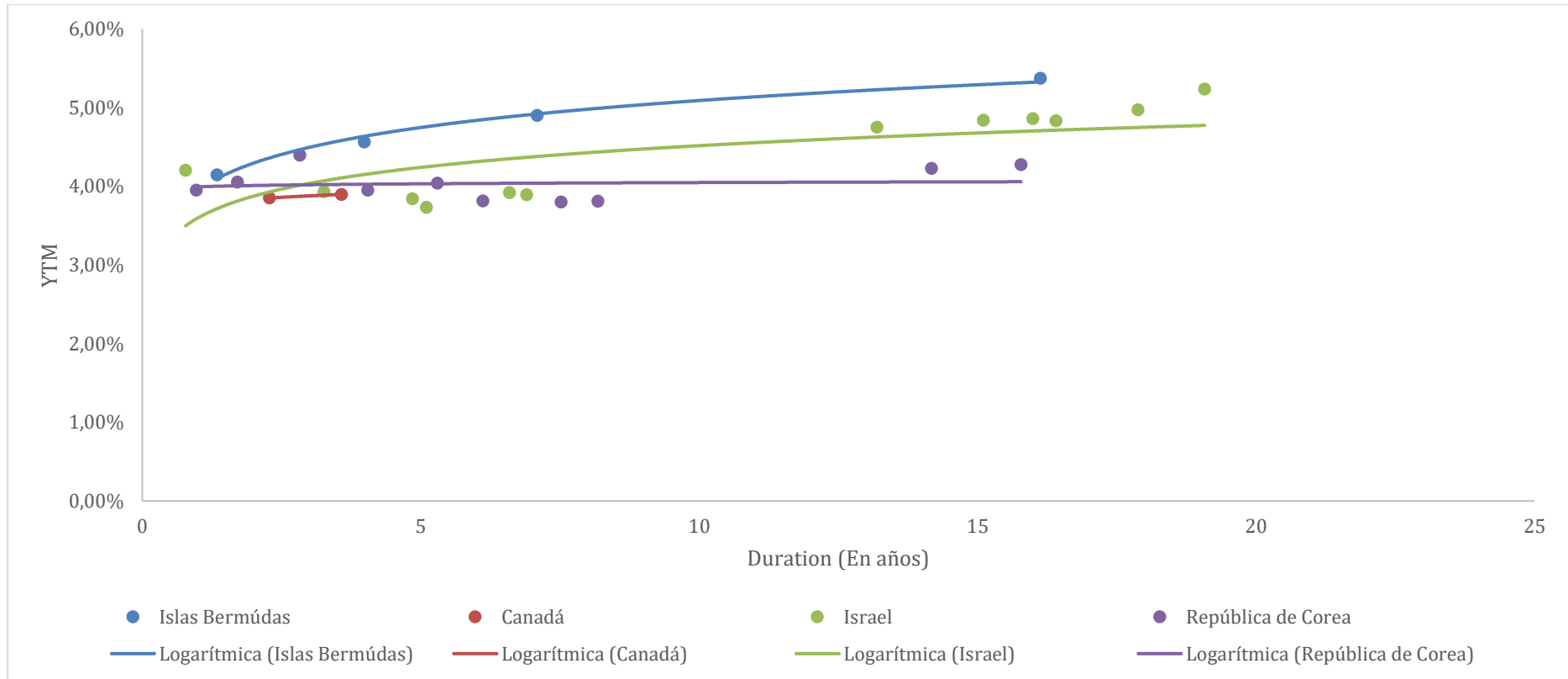


TARALLO S.A. ALyC y AN Propio N° 198 de CNV  
Corrientes 730 Piso 4 Oficina A – S2000CTT – Rosario – Argentina

**Curvas de tasas soberanas países asiáticos, excluyendo a Japón, en USD**



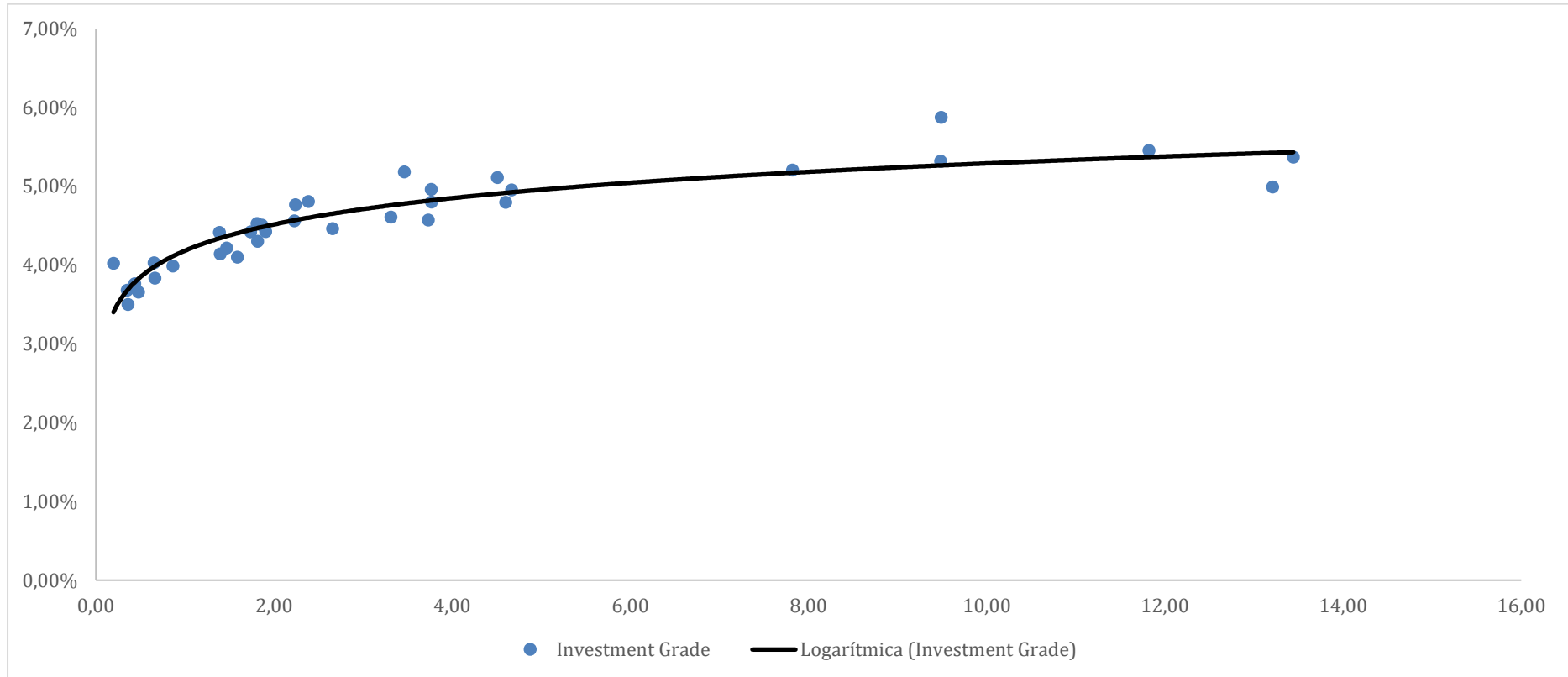
## Curvas de tasas soberanas países desarrollados, excluyendo Europa y Estados Unidos, en USD



TARALLO S.A. ALyC y AN Propio N° 198 de CNV  
Corrientes 730 Piso 4 Oficina A – S2000CTT – Rosario – Argentina

# Curvas de tasas por sector en Estados Unidos

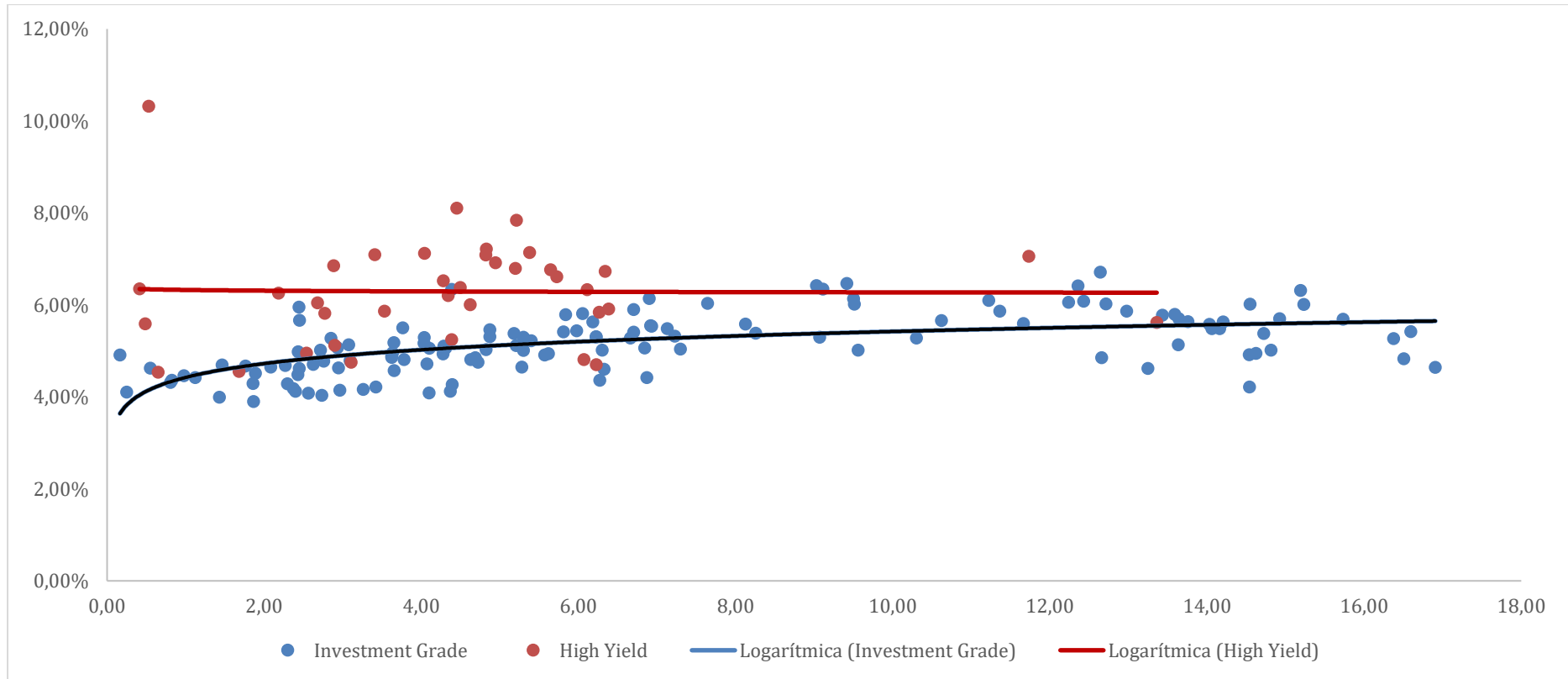
## Curvas de tasas Sector Financiero Estados Unidos



TARALLO S.A. ALyC y AN Propio N° 198 de CNV  
Corrientes 730 Piso 4 Oficina A – S2000CTT – Rosario – Argentina

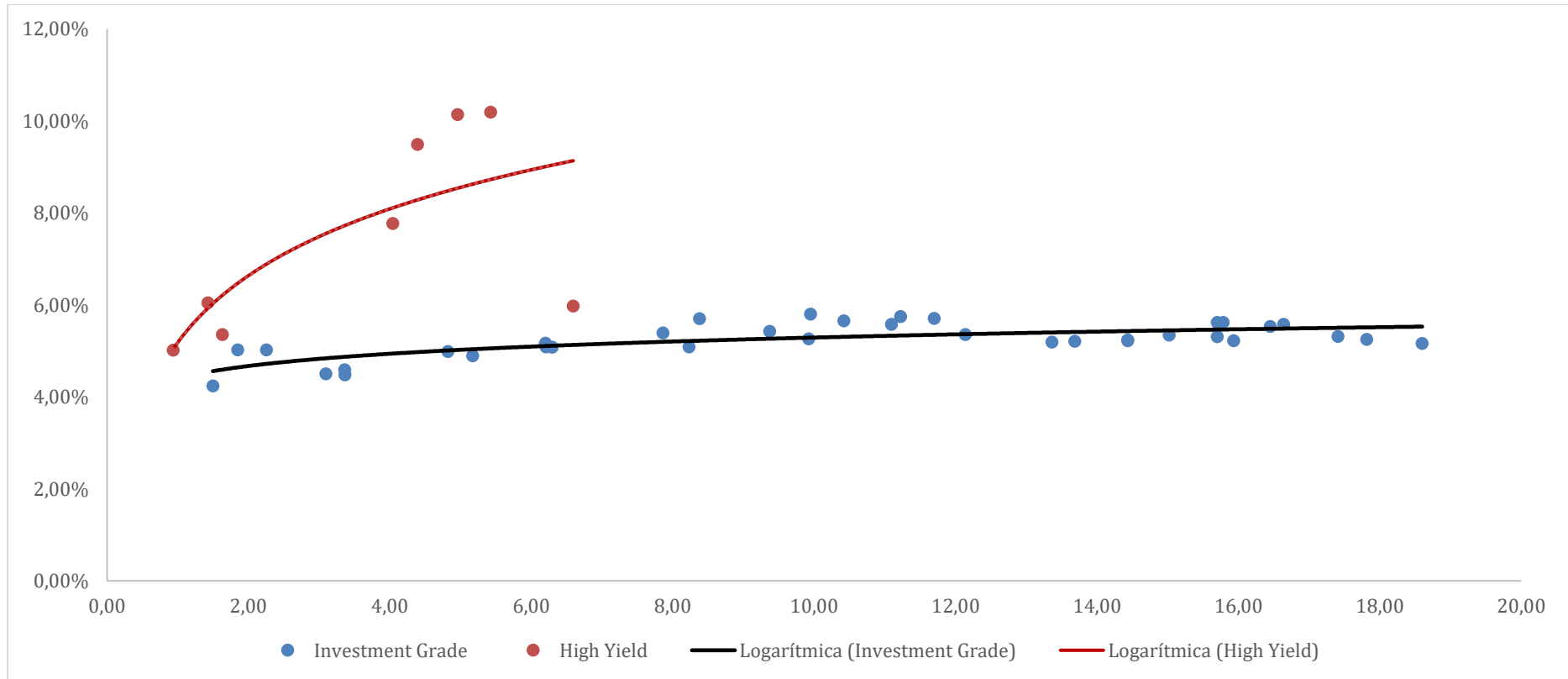


## Curvas de tasas Sector Industrial Estados Unidos



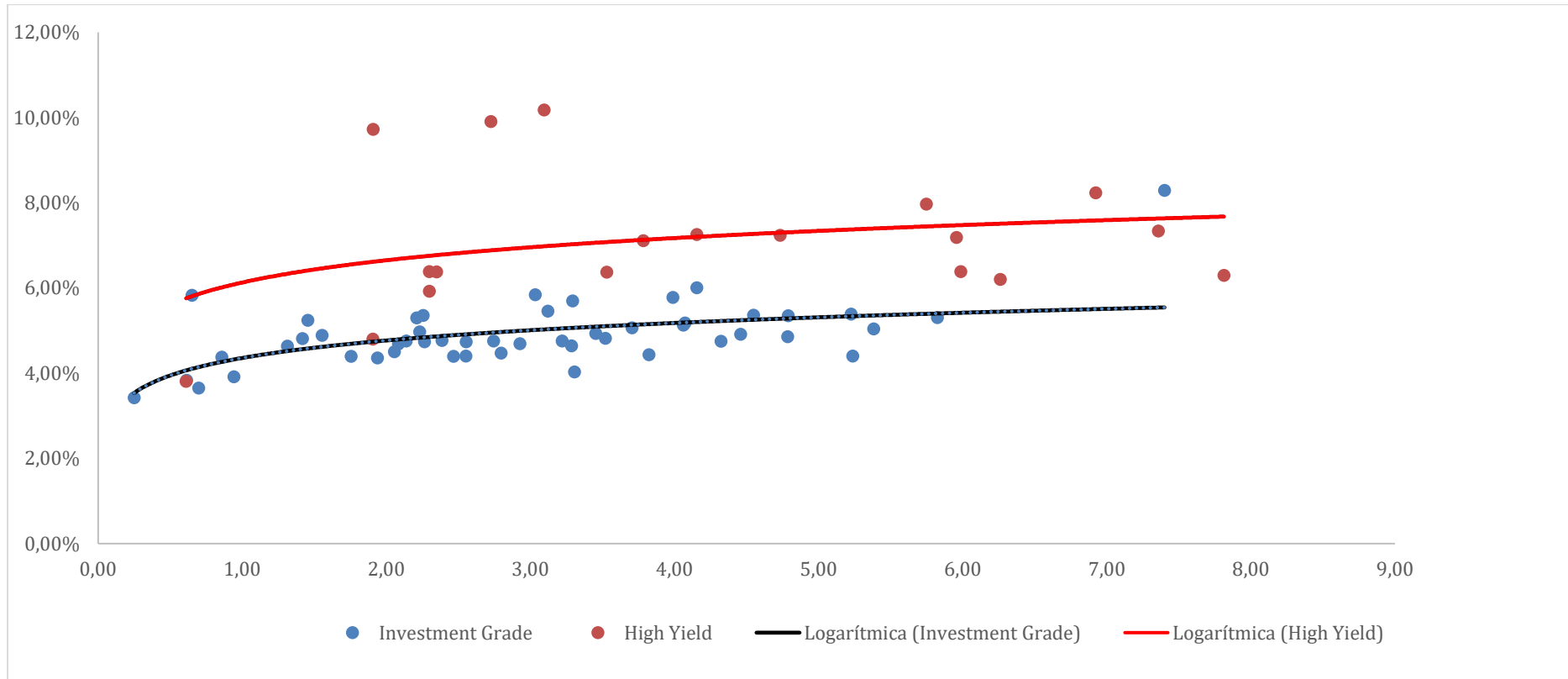
TARALLO S.A. ALyC y AN Propio N° 198 de CNV  
Corrientes 730 Piso 4 Oficina A – S2000CTT – Rosario – Argentina

## Curvas de tasas Sector Telecomunicaciones Estados Unidos



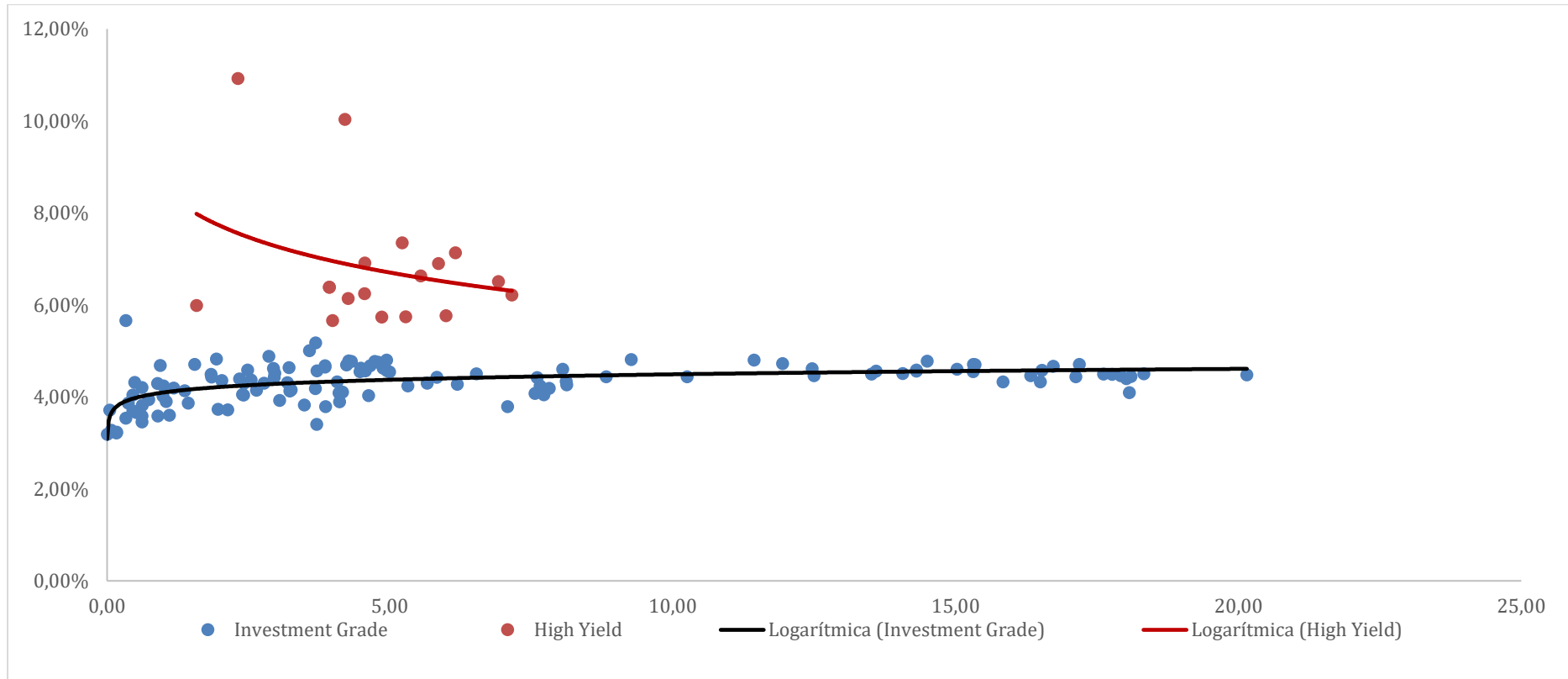
TARALLO S.A. ALyC y AN Propio N° 198 de CNV  
Corrientes 730 Piso 4 Oficina A – S2000CTT – Rosario – Argentina

## Curvas de tasas Sector Real Estate Estados Unidos



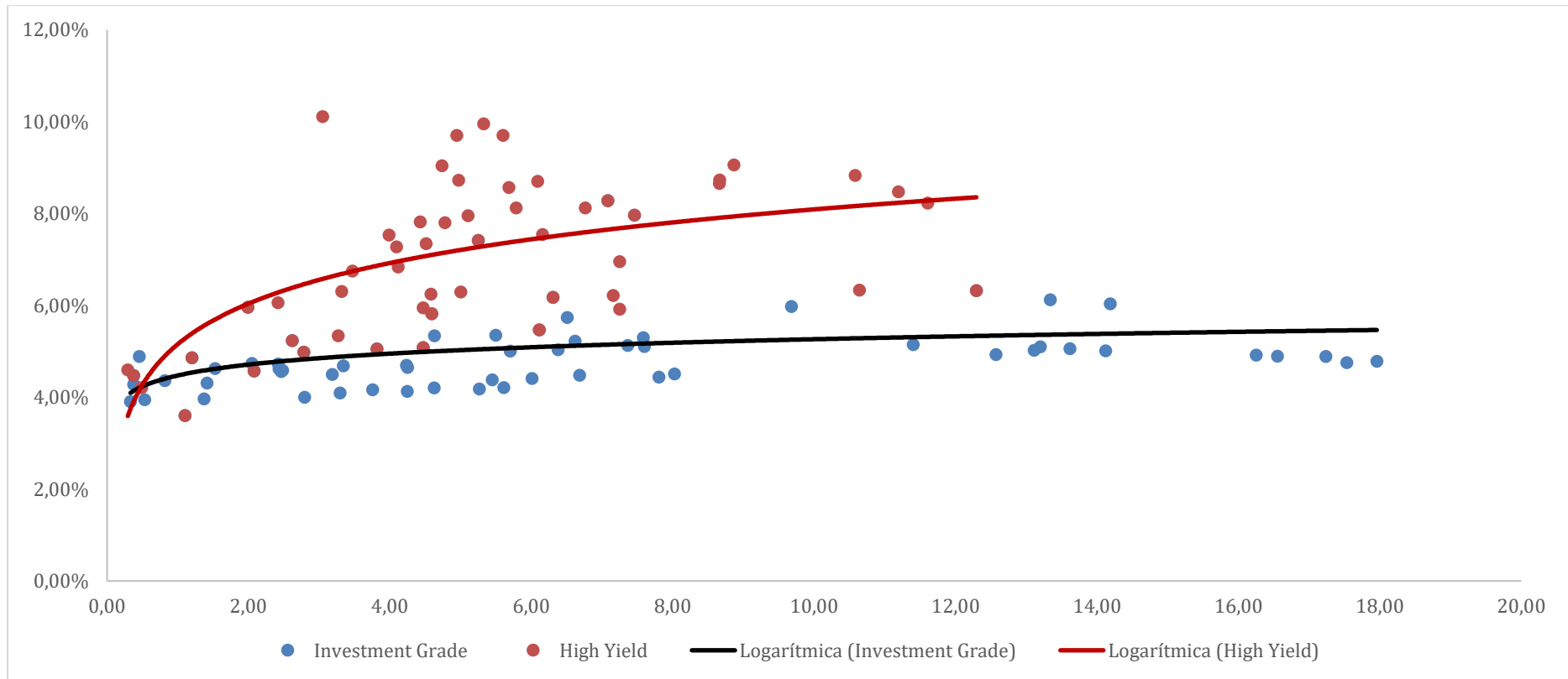
TARALLO S.A. ALyC y AN Propio N° 198 de CNV  
 Corrientes 730 Piso 4 Oficina A – S2000CTT – Rosario – Argentina

## Curvas de tasas Sector Consumo Básico Estados Unidos



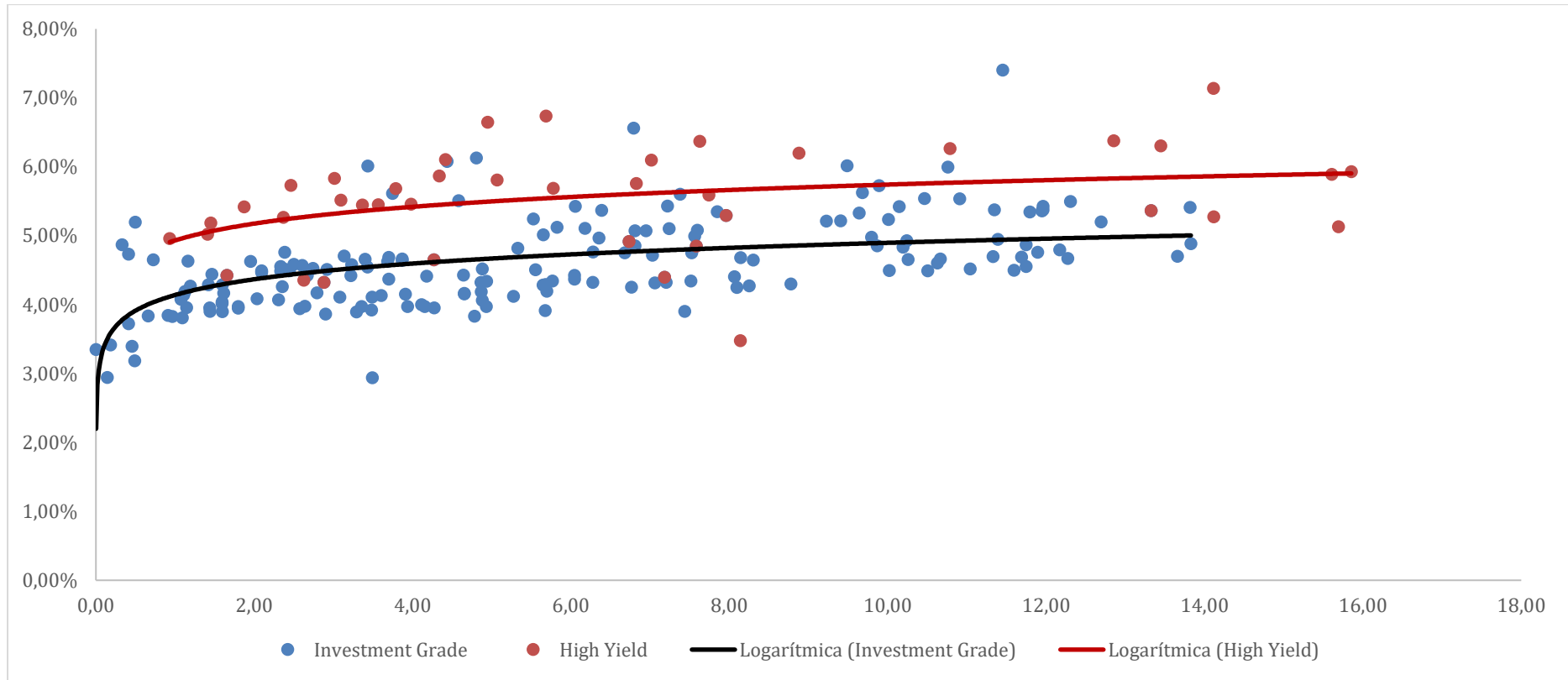
TARALLO S.A. ALyC y AN Propio N° 198 de CNV  
Corrientes 730 Piso 4 Oficina A – S2000CTT – Rosario – Argentina

## Curvas de tasas Sector Consumo Discrecional Estados Unidos



TARALLO S.A. ALyC y AN Propio N° 198 de CNV  
Corrientes 730 Piso 4 Oficina A – S2000CTT – Rosario – Argentina

## Curvas de tasas Sector Salud Estados Unidos



TARALLO S.A. ALyC y AN Propio N° 198 de CNV  
Corrientes 730 Piso 4 Oficina A – S2000CTT – Rosario – Argentina

## Bonos Corporativos en Estados Unidos, Europa y China

### Bonos corporativos Investment Grade de Estados Unidos en USD.

|                                 |           |
|---------------------------------|-----------|
| Variación interanual IPC EE.UU. | 8,30% (*) |
| Último anuncio                  | 13/9/2022 |

| Emisión  | País           | Emisor                         | Volumen en circulación (USD) | Valor nominal / Monto mínimo de negociación | ISIN         | Rentabilidad Indicativa (%) | Duración en años |
|--|----------------|--------------------------------|------------------------------|---|--------------|-----------------------------|------------------|
| Voya Financial, 5.65% 15may2053, USD                 | Estados Unidos | Voya Financial                 | 749.250.000                  | 2.000                                       | US45685EAG17 | 7,001                       | 0,65             |
| HF Sinclair, 2.625% 1oct2023, USD                    | Estados Unidos | HF Sinclair                    | 59.652.000                   | 2.000                                       | US436106AB48 | 6,129                       | 1,01             |
| BlackStone Private Credit Fund, 2.35% 22nov2024, USD | Estados Unidos | BlackStone Private Credit Fund | 102.000                      | 2.000                                       | USU0926HAG57 | 6,689                       | 2,10             |
| Kohls, 9.5% 15may2025, USD                           | Estados Unidos | Kohls                          | 600.000.000                  | 2.000                                       | US500255AW45 | 7,744                       | 2,33             |
| Ares Capital, 3.875% 15jan2026, USD                  | Estados Unidos | Ares Capital                   | 1.150.000.000                | 1.000                                       | US04010LAZ67 | 6,224                       | 3,09             |
| Santander Holdings USA, 2.49% 6jan2028, USD          | Estados Unidos | Santander Holdings USA         | 1.000.000.000                | 2.000                                       | US80282KBC99 | 6,202                       | 4,08             |
| Prudential Financial, 4.5% 15sep2047, USD            | Estados Unidos | Prudential Financial           | 750.000.000                  | 2.000                                       | US744320AW24 | 6,110                       | 4,35             |
| Kinder Morgan, 7.25% 1mar2028, USD                   | Estados Unidos | Kinder Morgan                  | 32.004.000                   | 1.000                                       | US482620AW10 | 6,064                       | 4,56             |
| Continental Resources, 4.375% 15jan2028, USD         | Estados Unidos | Continental Resources          | 999.700.000                  | 2.000                                       | US212015AS02 | 6,070                       | 4,69             |
| MasTec, 4.5% 15aug2028, USD                          | Estados Unidos | MasTec                         | 600.000.000                  | 2.000                                       | USU5759TAC90 | 6,006                       | 5,14             |
| Huntsman International, 4.5% 1may2029, USD           | Estados Unidos | Huntsman International         | 750.000.000                  | 2.000                                       | US44701QBE17 | 6,295                       | 5,58             |

TARALLO S.A. ALyC y AN Propio N° 198 de CNV  
Corrientes 730 Piso 4 Oficina A – S2000CTT – Rosario – Argentina

|  |                |                               |               |       |              |       |      |
|--|----------------|-------------------------------|---------------|-------|--------------|-------|------|
| Paramount Global, 7.875%<br>30jul2030, USD         | Estados Unidos | Paramount Global              | 826.813.000   | 1.000 | US925524AH30 | 6,223 | 5,99 |
| Jefferies Group, 4.15% 23jan2030, USD              | Estados Unidos | Jefferies Group               | 1.000.000.000 | 5.000 | US47233JBH05 | 6,003 | 6,22 |
| Spirit Realty, LP, 3.4% 15jan2030, USD             | Estados Unidos | Spirit Realty, LP             | 500.000.000   | 1.000 | US84861TAF57 | 6,064 | 6,34 |
| ONEOK, 6.35% 15jan2031, USD                        | Estados Unidos | ONEOK                         | 600.000.000   | 2.000 | US682680BE21 | 6,026 | 6,47 |
| Brixmor Operating Partnership, 4.05% 1jul2030, USD | Estados Unidos | Brixmor Operating Partnership | 800.000.000   | 2.000 | US11120VAJ26 | 6,111 | 6,53 |
| El Paso Natural Gas, 8.375% 15jun2032, USD         | Estados Unidos | El Paso Natural Gas           | 299.490.000   | 1.000 | US283695BK98 | 6,203 | 6,87 |
| Metlife, 6.4% 15dec2066, USD                       | Estados Unidos | Metlife                       | 1.250.000.000 | 1.000 | US59156RAP38 | 6,252 | 6,94 |
| Hess, 7.125% 15mar2033, USD                        | Estados Unidos | Hess                          | 539.805.000   | 1.000 | US023551AM66 | 6,382 | 7,32 |
| Global Payments, 5.4% 15aug2032, USD               | Estados Unidos | Global Payments               | 750.000.000   | 2.000 | US37940XAQ51 | 6,012 | 7,63 |



## Bonos corporativos High Yield de Estados Unidos en USD.

|                                 |           |
|---------------------------------|-----------|
| Variación interanual IPC EE.UU. | 8,30% (*) |
| Último anuncio                  | 13/9/2022 |

| Emisión  | País           | Emisor                               | Volumen en circulación (USD) | Valor nominal / Monto mínimo de negociación | ISIN         | Rentabilidad Indicativa (%) | Duración en años |
|--|----------------|--------------------------------------|------------------------------|---|--------------|-----------------------------|------------------|
| DISH DBS, 5.875% 15nov2024, USD                            | Estados Unidos | DISH DBS                             | 1.999.700.000                | 2.000                                       | US25470XAW56 | 10,352                      | 2,00             |
| CSI Compressco, 7.5% 1apr2025, USD                         | Estados Unidos | CSI Compressco                       | 350.000.000                  | 2.000                                       | USU1289BAA09 | 10,869                      | 2,25             |
| Chobani, 7.5% 15apr2025, USD                               | Estados Unidos | Chobani                              | 530.000.000                  | 2.000                                       | USU1703HAA50 | 9,723                       | 2,29             |
| Diversified Healthcare Trust, 9.75% 15jun2025, USD         | Estados Unidos | Diversified Healthcare Trust         | 500.000.000                  | 2.000                                       | US25525PAA57 | 11,566                      | 2,38             |
| Trinseo Materials Operating S. C. A., 5.375% 1sep2025, USD | Estados Unidos | Trinseo Materials Operating S. C. A. | 500.000.000                  | 2.000                                       | USL9339WAD13 | 11,112                      | 2,67             |
| New Residential Investment, 6.25% 15oct2025, USD           | Estados Unidos | Rithm Capital                        | 550.000.000                  | 2.000                                       | USU65228AA34 | 9,905                       | 2,73             |
| STL Holding Co, 7.5% 15feb2026, USD                        | Estados Unidos | STL Holding Co                       | 225.000.000                  | 2.000                                       | USU8597WAA63 | 11,827                      | 2,99             |
| USA Compression Partners, 6.875% 1apr2026, USD             | Estados Unidos | USA Compression Partners             | 725.000.000                  | 2.000                                       | US91740PAC23 | 9,261                       | 3,05             |
| TransMontaigne Partners, 6.125% 15feb2026, USD             | Estados Unidos | TransMontaigne Partners              | 300.000.000                  | 1.000                                       | US89376VAA89 | 11,575                      | 3,05             |
| LifePoint Health, 9.75% 1dec2026, USD                      | Estados Unidos | LifePoint Health                     | 1.425.000.000                | 2.000                                       | USU53039AE01 | 10,899                      | 3,40             |
| Moss Creek Resources, 10.5% 15may2027, USD                 | Estados Unidos | Moss Creek Resources                 | 500.000.000                  | 2.000                                       | USU62000AB75 | 11,059                      | 3,63             |
| Royal Caribbean Cruises, 11.625% 15aug2027, USD            | Estados Unidos | Royal Caribbean Cruises              | 1.250.000.000                | 2.000                                       | USV7780TAJ26 | 11,977                      | 3,80             |

TARALLO S.A. ALyC y AN Propio N° 198 de CNV  
Corrientes 730 Piso 4 Oficina A – S2000CTT – Rosario – Argentina

|   |                |  |               |       |              |        |      |
|---|----------------|--|---------------|-------|--------------|--------|------|
| Fortress Transportation and Infrastructure Investors, 9.75% 1aug2027, USD | Estados Unidos | Fortress Transportation and Infrastructure Investors | 400.000.000   | 2.000 | USU3458LAG69 | 9,174  | 3,92 |
| Ashton Woods USA, 6.625% 15jan2028, USD                                   | Estados Unidos | Ashton Woods USA                                     | 250.000.000   | 2.000 | USU04537AF00 | 9,127  | 4,42 |
| Zayo Group Holdings, 6.125% 1mar2028, USD                                 | Estados Unidos | Zayo Group Holdings                                  | 1.080.000.000 | 2.000 | USU98831AB33 | 11,640 | 4,54 |
| NFP Corp, 6.875% 15aug2028, USD   | Estados Unidos | NFP Corp   | 2.075.000.000 | 2.000 | USU65103AF70 | 10,790 | 4,76 |
| Emergent Biosolutions, 3.875% 15aug2028, USD                              | Estados Unidos | Emergent Biosolutions                                | 450.000.000   | 2.000 | USU29136AA31 | 11,876 | 5,10 |
| Vista Outdoor, 4.5% 15mar2029, USD  | Estados Unidos | Vista Outdoor  | 500.000.000   | 2.000 | USU9225LAB63 | 9,950  | 5,32 |
| Lumen Technologies, 5.375% 15jun2029, USD                                 | Estados Unidos | Lumen Technologies                                   | 1.000.000.000 | 2.000 | USU54985AA15 | 10,191 | 5,42 |
| Sinclair Television Group, 5.5% 1mar2030, USD                             | Estados Unidos | Sinclair Television Group                            | 500.000.000   | 2.000 | USU8275QAJ95 | 10,004 | 5,82 |

## Bonos corporativos Investment Grade de Europa en EUR.

|                               |           |
|-------------------------------|-----------|
| Variación interanual IPC U.E. | 9,10% (*) |
| Último anuncio                | 31/8/2022 |

| Emisión   | País         | Emisor                           | Volumen en circulación (EUR) | Valor nominal / Monto mínimo de negociación | ISIN         | Rentabilidad Indicativa (%) | Duración en años |
|---|--------------|----------------------------------|------------------------------|---|--------------|-----------------------------|------------------|
| Erste Group, 0.3% 28aug2023, EUR                            | Austria      | Erste Group                      | 50.000.000                   | 1.000                                       | AT0000A26853 | 2,607                       | 0,95             |
| Fresenius SE, 1.5% 30jan2024, EUR                           | Alemania     | Fresenius SE                     | 700.000.000                  | 1.000                                       | XS1554373248 | 2,505                       | 1,36             |
| Volkswagen Financial Services AG, 0% 19jul2024, EUR (1157D) | Alemania     | Volkswagen Financial Services AG | 1.250.000.000                | 1.000                                       | XS2343821794 | 2,850                       | 1,85             |
| Commerzbank, 0.625% 28aug2024, EUR (928)                    | Alemania     | Commerzbank                      | 1.000.000.000                | 1.000                                       | DE000CZ40N04 | 2,638                       | 1,95             |
| BNP Paribas, 2.875% 20dec2024, EUR                          | Francia      | BNP Paribas                      | 300.000.000                  | 1.000                                       | XS1023684522 | 2,988                       | 2,19             |
| Fresenius Medical Care, 1.5% 11jul2025, EUR                 | Alemania     | Fresenius Medical Care           | 500.000.000                  | 1.000                                       | XS1854532949 | 2,592                       | 2,78             |
| DZ Bank, 0% 17dec2025, EUR (5479D)                          | Alemania     | DZ Bank                          | 50.000.000                   | 1.000                                       | DE000DZ3QC68 | 2,664                       | 3,21             |
| Credit Agricole SA, 0.3625% 9jul2026, EUR (561)             | Francia      | Credit Agricole SA               | 250.000.000                  | 100   | FR0013433133 | 2,953                       | 3,80             |
| Lanxess AG, 1% 7oct2026, EUR                                | Alemania     | Lanxess AG                       | 500.000.000                  | 1.000                                       | XS1501367921 | 2,542                       | 3,96             |
| BASF, 0.75% 10nov2026, EUR                                  | Alemania     | BASF                             | 500.000.000                  | 1.000                                       | DE000A188WW1 | 2,597                       | 4,08             |
| Rabobank, 1.375% 3feb2027, EUR                              | Países Bajos | Rabobank                         | 1.500.000.000                | 1.000                                       | XS1180130939 | 2,615                       | 4,25             |
| Anheuser-Busch InBev, 1.125% 1jul2027, EUR                  | Belgica      | Anheuser-Busch InBev             | 1.250.000.000                | 1.000                                       | BE6312821612 | 2,827                       | 4,68             |

|  |                |                              |               |       |              |       |      |
|--|----------------|------------------------------|---------------|-------|--------------|-------|------|
| Deutsche Telekom, 0.5% 5jul2027, EUR                     | Alemania       | Deutsche Telekom             | 1.250.000.000 | 1.000 | XS2024715794 | 2,577 | 4,76 |
| Linde plc, 1% 20apr2028, EUR                             | El Reino Unido | Linde plc                    | 750.000.000   | 1.000 | XS1397134609 | 2,569 | 5,45 |
| BMW, 1% 22may2028, EUR                                   | Alemania       | BMW                          | 750.000.000   | 1.000 | XS2447564332 | 2,736 | 5,53 |
| Deutsche Bahn, 0.375% 23jun2029, EUR                     | Alemania       | Deutsche Bahn                | 850.000.000   | 1.000 | XS2193666042 | 2,664 | 6,69 |
| Nestle S.A., 1.25% 2nov2029, EUR                         | Suiza          | Nestle S.A.                  | 750.000.000   | 1.000 | XS1707075328 | 2,558 | 6,78 |
| Instituto de Credito Oficial, 4.55% 15sep2031, EUR (477) | España         | Instituto de Credito Oficial | 50.000.000    | 1.000 | XS1453496306 | 2,880 | 7,39 |
| Mercedes-Benz Group, 0.75% 10sep2030, EUR (92)           | Alemania       | Mercedes-Benz Group          | 1.000.000.000 | 1.000 | DE000A289QR9 | 2,964 | 7,77 |

## Bonos corporativos High Yield de Europa en EUR.

|                               |           |
|-------------------------------|-----------|
| Variación interanual IPC U.E. | 9,10% (*) |
| Último anuncio                | 31/8/2022 |

| Emisión   | País           | Emisor                             | Volumen en circulación (EUR) | Valor nominal / Monto mínimo de negociación | ISIN         | Rentabilidad Indicativa (%) | Duración en años |
|---|----------------|------------------------------------|------------------------------|---|--------------|-----------------------------|------------------|
| La Financiere ATALIAN, 4% 15may2024, EUR              | Francia        | La Financiere ATALIAN              | 625.000.000                  | 100.000                                     | XS1605600532 | 6,728                       | 1,59             |
| National Bank of Greece, 8.25% 18jul2029, EUR         | Grecia         | National Bank of Greece            | 400.000.000                  | 100.000                                     | XS2028846363 | 7,896                       | 1,77             |
| IM Group, 6.625% 1mar2025, EUR                        | Francia        | IM Group                           | 200.000.000                  | 100.000                                     | XS2114146181 | 8,273                       | 2,20             |
| Deutsche Lufthansa, 2.875% 11feb2025, EUR             | Alemania       | Deutsche Lufthansa                 | 750.000.000                  | 100.000                                     | XS2296201424 | 6,390                       | 2,33             |
| Grifols, 3.2% 1may2025, EUR                           | España         | Grifols                            | 1.000.000.000                | 100.000                                     | XS1598757760 | 6,070                       | 2,47             |
| ams-OSRAM AG, 6% 31jul2025, EUR                       | Austria        | ams-OSRAM AG                       | 850.000.000                  | 100.000                                     | XS2195511006 | 8,956                       | 2,62             |
| Intrum, 4.875% 15aug2025, EUR                         | Suecia         | Intrum                             | 850.000.000                  | 100.000                                     | XS2211136168 | 6,986                       | 2,71             |
| International Design Group, 6.5% 15nov2025, EUR       | Italia         | International Design Group         | 400.000.000                  | 100.000                                     | XS1908248963 | 9,066                       | 2,80             |
| Banijay Group, 6.5% 1mar2026, EUR                     | Francia        | Banijay Group                      | 400.000.000                  | 100.000                                     | XS2112335752 | 9,998                       | 3,09             |
| Rolls-Royce, 4.625% 16feb2026, EUR                    | El Reino Unido | Rolls-Royce                        | 750.000.000                  | 100.000                                     | XS2244322082 | 6,440                       | 3,14             |
| Techem Verwaltungsgesellschaft 674, 6% 30jul2026, EUR | Alemania       | Techem Verwaltungsgesellschaft 674 | 363.900.000                  | 100.000                                     | XS1859258383 | 8,281                       | 3,43             |
| Faurecia, 3.125% 15jun2026, EUR                       | Francia        | Faurecia                           |                              |   | XS1963830002 | 6,544                       | 3,48             |

TARALLO S.A. ALyC y AN Propio N° 198 de CNV  
Corrientes 730 Piso 4 Oficina A – S2000CTT – Rosario – Argentina

|   |              |                      | 750.000.000   | 100.000 |              |       |      |
|---|--------------|----------------------|---------------|---------|--------------|-------|------|
| Eurobank, 2% 5may2027, EUR                  | Grecia       | Eurobank             | 500.000.000   | 100.000 | XS2338193019 | 6,677 | 3,51 |
| Elior Group, 3.75% 15jul2026, EUR           | Francia      | Elior Group          | 550.000.000   | 100.000 | XS2360381730 | 9,067 | 3,56 |
| Marcolin, 6.125% 15nov2026, EUR             | Italia       | Marcolin             | 350.000.000   | 100.000 | XS2346563500 | 9,086 | 3,59 |
| Ibercaja Banco, 2.75% 23jul2030, EUR        | España       | Ibercaja Banco       | 500.000.000   | 100.000 | ES0244251015 | 7,450 | 3,68 |
| Kapla Holding, 3.375% 15dec2019, EUR        | Francia      | Kapla Holding        | 460.000.000   | 100.000 | XS2010034077 | 7,096 | 3,94 |
| Telecom Italia (TIM), 2.375% 12oct2027, EUR | Italia       | Telecom Italia (TIM) | 1.250.000.000 | 100.000 | XS1698218523 | 6,434 | 4,69 |
| Atlantia, 1.875% 12feb2028, EUR             | Italia       | Atlantia             | 1.000.000.000 | 100.000 | XS2301390089 | 6,281 | 5,10 |
| UPC Holding, 3.875% 15jun2029, EUR          | Países Bajos | UPC Holding          | 337.854.000   | 100.000 | XS1629969327 | 7,088 | 5,82 |

## Bonos corporativos Investment Grade de China en CNY.

|                                |           |
|--------------------------------|-----------|
| Variación interanual IPC China | 2,50% (*) |
| Último anuncio                 | 9/9/2022  |

| Emisión   | País  | Emisor   | Volumen en circulación (CNY) | Valor nominal / Monto mínimo de negociación | ISIN         | Rentabilidad Indicativa (%) | Duración en años |
|---|-------|--|------------------------------|---|--------------|-----------------------------|------------------|
| New Development Bank, 2.43%<br>3apr2023, CNY  | China | New Development Bank                                       | 5.000.000.000                | 100   | CND100031KN4 | 2,103                       | 0,55             |
| HSBC Bank (China), 2.95%<br>4jun2023, CNY   | China | HSBC Bank (China)  | 3.000.000.000                | 100   | CND100038FP4 | 2,132                       | 0,72             |
| Gansu Provincial Highway Aviation Tourism Investment Group, 3.95%<br>28jun2023, CNY | China | Gansu Provincial Highway Aviation Tourism Investment Group | 3.000.000.000                | 100   | CND100013887 | 2,703                       | 0,79             |
| China State Construction Engineering Corporation, 4.7%<br>17aug2023, CNY            | China | China State Construction Engineering Corporation           | 5.000.000.000                | 100   | CND10001ZSW0 | 2,032                       | 0,92             |
| ICBC, 3.37% 17sep2023, CNY  | China | ICBC   | 10.000.000.000               | 100   | CND10003NWM5 | 2,022                       | 0,98             |
| China Construction Bank, 3.5%<br>29oct2023, CNY                                     | China | China Construction Bank                                    | 20.000.000.000               | 100   | CND10003S478 | 2,043                       | 1,09             |
| Bank of Communications Financial Leasing, 3.65% 9nov2023, CNY                       | China | Bank of Communications Financial Leasing                   | 3.000.000.000                | 100   | CND10003V8Q7 | 2,082                       | 1,12             |
| ICBC Financial Leasing, 3.9%<br>23nov2023, CNY                                      | China | ICBC Financial Leasing                                     | 3.000.000.000                | 100   | CND10003VZC2 | 2,095                       | 1,15             |
| CITIC, 5.1% 12dec2023, CNY  | China | CITIC  | 6.000.000.000                | 100   | CND000000604 | 2,051                       | 1,21             |
| China Southern Power Grid, 3.76%<br>14jan2024, CNY                                  | China | China Southern Power Grid                                  | 5.000.000.000                | 100   | CND10001XP00 | 2,105                       | 1,30             |

TARALLO S.A. ALyC y AN Propio N° 198 de CNV  
Corrientes 730 Piso 4 Oficina A – S2000CTT – Rosario – Argentina

|  |       |                                 |                 |     |              |       |      |
|--|-------|---------------------------------|-----------------|-----|--------------|-------|------|
| CMB Financial Leasing, 3.6%<br>28jan2024, CNY            | China | CMB Financial Leasing           | 4.000.000.000   | 100 | CND100042MY4 | 2,143 | 1,34 |
| China Development Bank, 3.3%<br>1feb2024, CNY            | China | China Development Bank          | 180.340.000.000 | 100 | CND10001YBB3 | 2,010 | 1,35 |
| State Grid Corporation of China, 5.38%<br>19aug2024, CNY | China | State Grid Corporation of China | 4.000.000.000   | 100 | CND100007WF5 | 2,271 | 1,88 |
| China Exim Bank, 4.38%<br>4nov2024, CNY                  | China | China Exim Bank                 | 5.000.000.000   | 100 | CND100007XM9 | 2,200 | 2,02 |
| Industrial Bank, 2.95%<br>27may2025, CNY                 | China | Industrial Bank                 | 5.000.000.000   | 100 | CND100037XT1 | 2,414 | 2,62 |
| China Yangtze Power, 4.5%<br>14sep2025, CNY              | China | China Yangtze Power             | 3.000.000.000   | 100 | CND1000129G5 | 2,562 | 2,88 |
| China Huaneng Group, 3.95%<br>21apr2026, CNY             | China | China Huaneng Group             | 3.500.000.000   | 100 | CND1000131N7 | 2,712 | 3,39 |
| Guangzhou Metro Group, 3.99%<br>28apr2026, CNY           | China | Guangzhou Metro Group           | 200.000.000     | 100 | CND100009SS2 | 2,708 | 3,41 |
| Agricultural Bank of China, 3.1%<br>6may2030, CNY        | China | Agricultural Bank of China      | 40.000.000.000  | 100 | CND100035DQ3 | 2,857 | 6,86 |
| Bank of Communications, 3.24%<br>21may2030, CNY          | China | Bank of Communications          | 40.000.000.000  | 100 | CND100037P00 | 2,967 | 6,87 |



## Bonos corporativos High Yield de China en CNY.

|                                |           |
|--------------------------------|-----------|
| Variación interanual IPC China | 2,50% (*) |
| Último anuncio                 | 9/9/2022  |

| Emisión  | País  | Emisor   | Volumen en circulación (CNY) | Valor nominal / Monto mínimo de negociación | ISIN         | Rentabilidad Indicativa (%) | Duración en años |
|--|-------|--|------------------------------|---|--------------|-----------------------------|------------------|
| Zhongyuan Asset Management, 3.9% 30mar2023, CNY                  | China | Zhongyuan Asset Management                     | 500.000.000                  | 100   | CND100033ZC1 | 3,250                       | 0,54             |
| Taizhou Huaxin Pharmaceutical Investment, 7.5% 2apr2023, CNY     | China | Taizhou Huaxin Pharmaceutical Investment       | 500.000.000                  | 100   | CND100016CK8 | 4,317                       | 0,55             |
| Henan Zhongyuan Financial Holding, 4.5% 27apr2023, CNY           | China | Henan Zhongyuan Financial Holding              | 500.000.000                  | 100   | CND100035KD6 | 5,454                       | 0,62             |
| Wens Foodstuffs Group, 4% 11aug2023, CNY                         | China | Wens Foodstuffs Group                          | 900.000.000                  | 100   | CND10003KPJ1 | 3,208                       | 0,91             |
| Zhongyuan Asset Management, 4.48% 16sep2023, CNY                 | China | Zhongyuan Asset Management                     | 500.000.000                  | 100   | CND10003PQY7 | 4,478                       | 0,96             |
| Kunming Industrial Development&Investment, 5.5% 29oct2023, CNY   | China | Kunming Industrial Development&Investment      | 1.000.000.000                | 100   | CND10003V985 | 6,652                       | 1,07             |
| Jiangsu Fangyang Group, 6.8% 4mar2024, CNY                       | China | Jiangsu Fangyang Group                         | 500.000.000                  | 100   | CND100045XH9 | 4,561                       | 1,41             |
| Inner Mongolia Baotou Steel Union, 6.1% 22apr2024, CNY           | China | Inner Mongolia Baotou Steel Union              | 2.500.000.000                | 100   | CND100027KS1 | 5,279                       | 1,55             |
| ChengDu JingKai GuoTou Investment Group, 5.45% 19jun2024, CNY    | China | ChengDu JingKai GuoTou Investment Group        | 500.000.000                  | 100   | CND10002H2B1 | 3,809                       | 1,71             |
| Zoomlion Heavy Industry Science and Technology, 3.75% 11oct2024, | China | Zoomlion Heavy Industry Science and Technology | 2.500.000.000                | 100   | CND10002HP74 | 3,674                       | 1,97             |

TARALLO S.A. ALyC y AN Propio N° 198 de CNV  
Corrientes 730 Piso 4 Oficina A – S2000CTT – Rosario – Argentina

| CNY   |       |   |               |     |              |       |      |
|---|-------|---|---------------|-----|--------------|-------|------|
| Henan Zhongyuan Financial Holding, 5% 28feb2025, CNY                            | China | Henan Zhongyuan Financial Holding                         | 700.000.000   | 100 | CND10002RF90 | 5,863 | 2,32 |
| Mianyang Investment, 3.76% 17apr2025, CNY                                       | China | Mianyang Investment                                       | 1.000.000.000 | 100 | CND100034X86 | 3,538 | 2,48 |
| Huai An Traffic Holding, 3.5% 17apr2025, CNY                                    | China | Huai An Traffic Holding                                   | 1.000.000.000 | 100 | CND100034SG5 | 3,233 | 2,49 |
| Huai An Traffic Holding, 4.2% 23sep2025, CNY                                    | China | Huai An Traffic Holding                                   | 600.000.000   | 100 | CND10003RSN2 | 3,614 | 2,79 |
| Urumqi Gaoxin Investment and Development Group, 4.03% 23sep2025, CNY            | China | Urumqi Gaoxin Investment and Development Group            | 500.000.000   | 100 | CND10003RTH2 | 3,435 | 2,80 |
| Shangrao City Construction Investment & Development Group, 4.97% 29jul2027, CNY | China | Shangrao City Construction Investment & Development Group | 1.000.000.000 | 100 | CND10003HJ14 | 4,182 | 4,43 |
| Shangrao City Construction Investment & Development Group, 5.05% 26aug2027, CNY | China | Shangrao City Construction Investment & Development Group | 700.000.000   | 100 | CND10003L4Q8 | 4,217 | 4,50 |
| Bank of Suzhou, 4.62% 7aug2030, CNY   | China | Bank of Suzhou  | 4.500.000.000 | 100 | CND10003J923 | 3,867 | 6,80 |
| Shandong Energy Group, 4.48% 28aug2030, CNY                                     | China | Shandong Energy Group                                     | 1.000.000.000 | 100 | CND10003L6H2 | 3,767 | 6,89 |

(\*) Las tablas y gráficos son de elaboración propia en base a la información de la base de datos de mercado al 14/09/22. Este informe tiene el mero propósito de brindar información, por lo que no constituye ni una oferta ni una recomendación de compra o venta de los instrumentos financieros en él mencionado.

Fuente Variación IPC:

EE.UU.: <https://es.investing.com/economic-calendar/cpi-733>

U.E.: <https://es.investing.com/economic-calendar/cpi-68>

China: <https://es.investing.com/economic-calendar/chinese-cpi-459g>